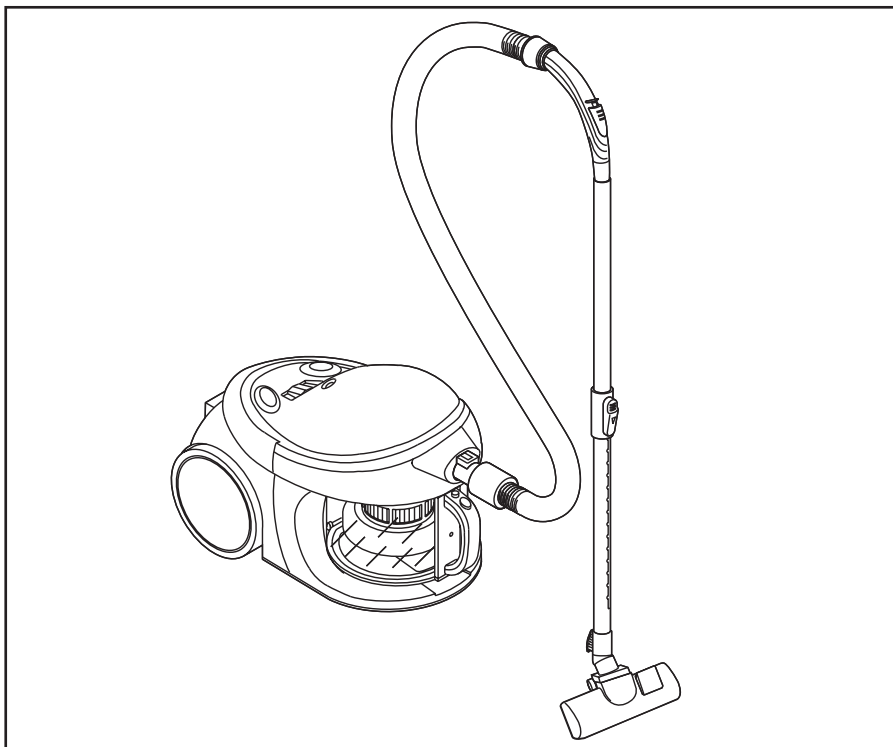




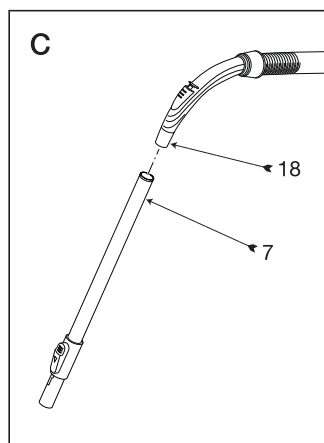
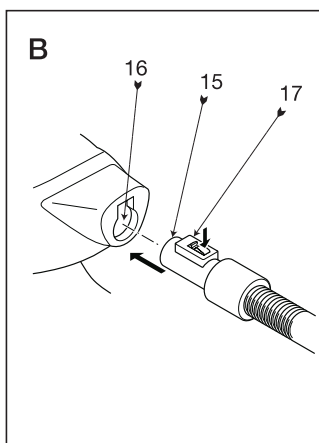
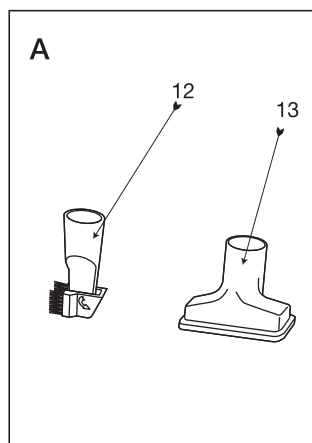
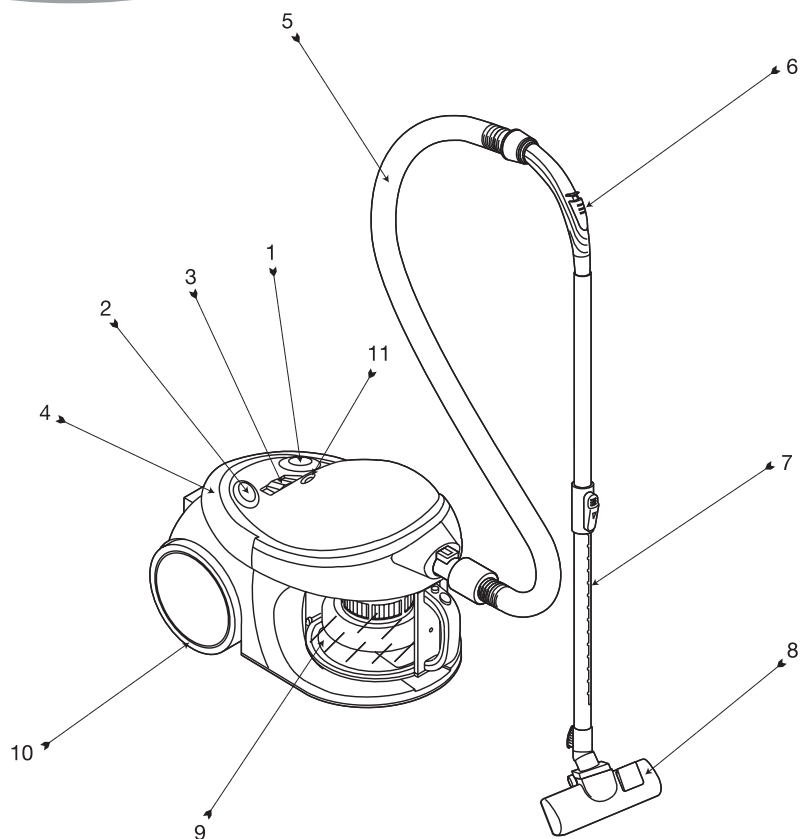
## Bagless Vacuum Cleaner

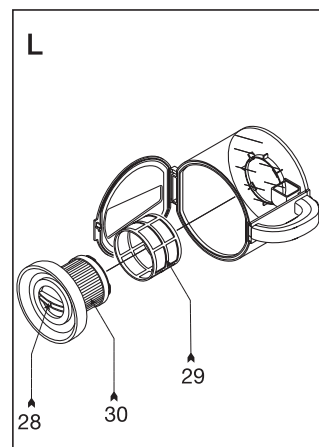
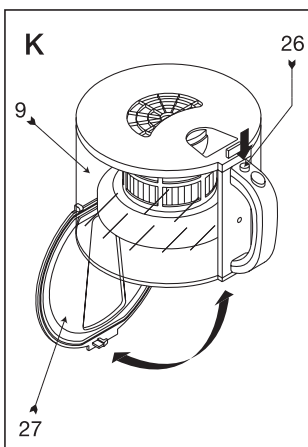
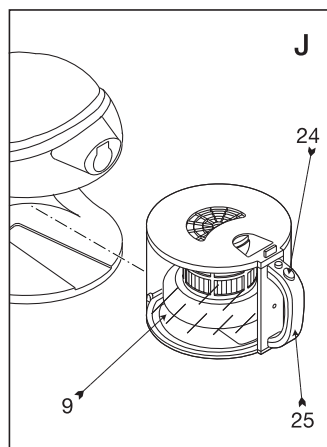
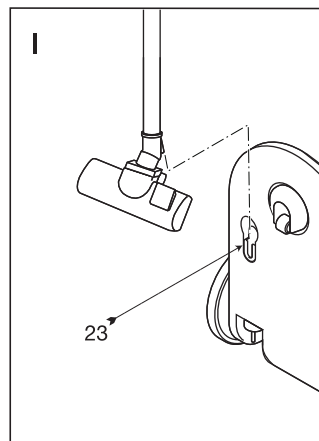
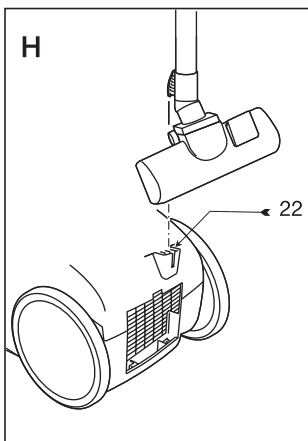
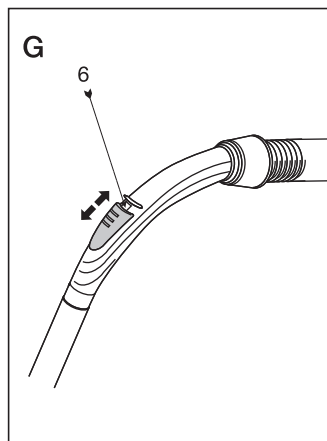
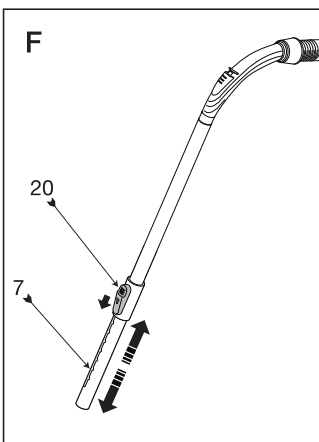
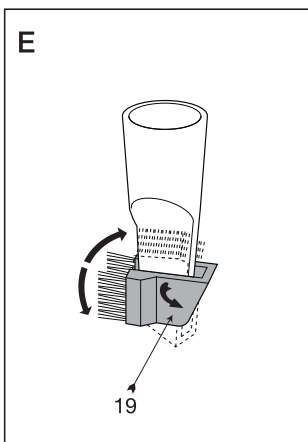
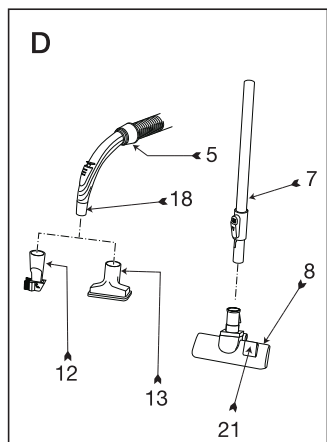


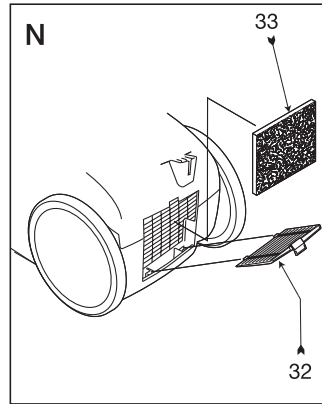
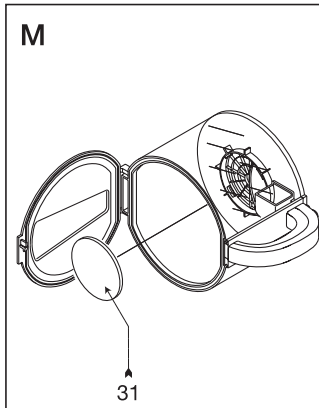
### First Use Safety Recommendation

Please read through this booklet for safe and efficient use of the appliance. We urge you to read and also follow all detailed instructions even if you are familiar with using this appliance.

Keep this guide handy for future reference.







### Intended use

Your BLACK+DECKER VM2040 vacuum cleaner has been designed for dry vacuum cleaning purposes. This appliance is intended for consumer indoor use only.

This appliance is not to be used in:

- Staff kitchen areas in shops, offices and other working environments;
- Farm Houses;
- By clients in hotels, motels and other residential type environments;
- Bed and breakfast type environments or any other non-household type environments.

### Safety instructions



**Warning! Read all safety warnings and all instructions.** Failure to follow the warnings and instructions listed below may result in electric shock, fire and/or serious injury.

- Read all of this manual carefully before
- The intended use is described in this manual. The use of any accessory or attachment or the performance of any operation with this appliance other than those recommended in this instruction manual may present a risk of personal injury.
- Retain this manual for future reference.

### Using your appliance

- Make sure that the appliance is switched off before connecting to or disconnecting from the power supply.
- Always take care when using the appliance.
- Do not use the appliance outdoors.
- Never pull the power supply cord to disconnect the plug from the socket. Keep the power supply cord away from heat, oil and sharp edges.
- If the power supply cord is damaged during use, disconnect the appliance from the power supply immediately. Do not touch the power supply cord before disconnecting from the power supply.
- Disconnect the appliance from the power supply when not in use, before fitting or removing parts and before cleaning.
- Do not immerse the appliance in water.

### After use

- Switch off and remove the plug from the socket before leaving the appliance unattended and before changing, cleaning or inspecting any parts of the appliance.
- When not in use, the appliance should be stored in a dry place.
- Children should not have access to stored appliances.

## Inspection and repairs

- Before use, check the appliance for damaged or defective parts. Check for breakage of parts, damage to switches and any other conditions that may affect its operation.
- Do not use the appliance if any part is damaged or defective.
- Have any damaged or defective parts repaired or replaced by an authorized repair agent.
- Before use, check the power supply cord for signs of damage, ageing and wear.
- Do not use the appliance if the power supply cord or mains plug is damaged or defective.
- If the power supply cord or mains plug is damaged or defective it must be repaired by the manufacturer or its service agent or a similarly qualified person in order to avoid a hazard. Do not cut the power supply cord and do not attempt to repair it yourself.
- Never attempt to remove or replace any parts other than those specified in this manual.
- Always be aware of the position of the power cable and hose so as to avoid a tripping hazard during use.
- Keep the motor exhaust away from eyes and faces.
- Keep children and animals at a safe distance when using this appliance.
- Always work from bottom up when using the appliance on stairs, and keep the appliance at least a stair below your working position.
- Do not use the appliance without the suction head or another suitable accessory mounted to the tube.
- Keep your hair, clothing and gloves away from moving parts.
- Do not use damaged accessories.
- Use only BLACK+DECKER accessories.
- Do not use the appliance on animals.
- Disconnect the product from the electrical supply before emptying, cleaning or carrying out any maintenance on the appliance.

## Additional safety instructions for vacuum cleaners

- Before use, always make sure that the filter or dust bag is correctly seated.
- Do not use the appliance to pick up any materials that could catch fire.
- Do not use the appliance to pick up any materials that are burning or smoking (matches, cigarettes, hot ash, etc.).
- Do not block the vents of the appliance.
- Avoid inhaling dust when emptying the appliance or the dust bag.
- Always keep the brush, crevice tool and other accessories away from the body whilst the unit is in operation.
- Always empty the product outside.
- Use extra care when cleaning stairs, use caution when vacuuming at the top of stairs, near children, etc.

## Carrying the appliance

During use the appliance can be carried using the handle (4).

## Temporarily parking the suction head (fig. H)

- Use the park position (22) for a temporary parking of the suction head.

## Safety of others

- This appliance is not intended for use by persons (including children) with reduced physical, sensory or mental capabilities, or lack of experience and knowledge, unless they have been given supervision or instruction concerning the use of the appliance by a person responsible for their safety.
- Children should be supervised to ensure that they do not play with the appliance.

## Electrical safety



This appliance is double insulated; therefore no earth wire is required. Always check that the power supply

corresponds to the voltage on the rating plate. Power plugs must match the outlet. Never modify the plug in any way.

Unmodified plugs and matching outlets will reduce risk of electric shock.

- If the supply cord is damaged, it must be replaced by the manufacturer or an authorised BLACK+DECKER Service Centre in order to avoid a hazard.

## Features

This Appliance includes some or all of the following features.

1. On/off switch
2. Cord rewind button
3. Speed control selector
4. Handle
5. Hose
6. Airflow control switch
7. Extension tube
8. Suction head
9. Dust container
10. Wheels
11. Bin full indicator

In addition, this appliance is supplied with some or all of the following accessories (fig. A)

12. Crevice tool / Brush tool
13. Upholstery brush

## Assembly

### Connecting the hose (fig. B)

- Insert the hose connector (15) into the inlet (16) of the appliance.
- Push the hose until the release buttons (17) click into place.
- To disconnect the hose, press the release buttons and pull out the hose.

### Connecting the tube (fig. C)

- Push the hose nozzle (18) into the tube (7).
- To remove the tube, pull the hose out of the tube.

### Mounting the suction head (fig. D)

The suction head (8) allows for vacuuming on carpet and hard surfaces (e.g. laminate and tiles).

- Push the tube (7) into the head (8).
- To remove the head, pull the tube out of the head.

### Mounting accessories (fig. D)

The crevice tool (12) allows for vacuuming in narrow and hard-to-reach places.

The brush tool (12) allows for vacuuming on furniture, blinds, curtains, windows and stairs.

The upholstery brush (13) allows for vacuuming furniture. The accessories can be mounted on both the hose (5) and the tube (7).

- Push the accessory onto the hose nozzle (18) or the tube (7).
- To remove an accessory, pull the accessory from the hose nozzle or the tube.

### Selecting the crevice tool or brush tool (fig. E)

- To use the crevice tool, move the brush part (19) against the direction of the arrow.
- To use the brush tool, move the brush part (19) in the direction of the arrow.

## Use

### Unwinding and rewinding the power cord

The cord rewind button (2) can be operated by hand or foot.

- Pull a sufficient length of cord from the back of the appliance.
- After use, press the cord rewind button to retract the cord into the unit. Manually guide the cord to ensure it does not swing back. Ensure the plug is correctly located.

### Adjusting the tube length (fig. F)

The extension tube (7) can be adjusted as follows:

- Push the knob (20) and slide the tube to the desired length.
- Release the knob.

### Adjusting the suction head (fig. D)

- For vacuuming on carpets, switch the brush actuator (21) into the up position.
- For vacuuming on laminates, tiles, etc., switch the brush actuator into the down position.

## Switching on and off

The on/off switch (1) can be operated by hand or foot.

- To switch the appliance on, press the on/off switch (1).
- To switch the appliance off, press the on/off switch again.

## Vacuuming

- When operating the appliance, make sure that the hose is not trapped, twisted or blocked.
- Before using the device first roll out a sufficient length of electric flex cable and plug into the mains socket. The yellow mark on the electric flex cable is the maximum length that must not be exceeded.

**Note:** In a few cases there may be a “whistling” sound at the start. This is not a fault and the sound goes away after a time.

**WARNING!** Do not suck up toner, plaster, cement, stone dust or drill dust. The sucking up of these materials blocks the filter

## Setting the suction force

The speed control selector (3) allows for a precise setting of the suction force. For vacuuming on a hard surface (e.g. floors), choose a high speed setting. For vacuuming on soft surfaces (e.g. upholstery), choose a low speed setting.

- Slide the speed control selector to the desired setting.

## Adjusting the airflow (fig. G)

Move the airflow control switch (6) to adjust the airflow as desired.

### Choose:

- Minimal suction power for curtains and sensitive materials.
- Medium suction power for upholstery cushions, mattresses, carpet floors.
- Maximum suction power for tiled, wooden and robust floor surfaces.

- In case of overheating, a cut-out will operate and the appliance will automatically stop.
- If the appliance stops operating, unplug the appliance and allow it to cool for 2-3 hours before continuing. Ensure the filters are cleaned and the unit is blockage free before switching back on.

## Emptying the dust container (fig. J & K)

The dust container (9) must be emptied when the maximum mark is reached or the bin full indicator (11) changes from green to red.

- Remove the hose.
- Press the release button (24).
- Hold the dust container at the handle (25). Slide the container (9) out of the appliance.
- Hold the container over a waste bin.
- Press the release button (26) to open the container (fig. K). Empty the dust container as necessary.
- Close the base (27) by moving it upward until the lock locates in the latch.
- Re-insert the container into the appliance until it locks into place.

## Cleaning (fig. J - N)

**Warning!** Before cleaning and maintenance, switch the appliance off and unplug it.

- From time to time wipe the appliance with a damp cloth. Do not use any abrasive or solvent-based cleaner. Do not immerse the appliance in water.

The appliance is fitted with 5 filters. Four of these are accessible to the user and are replaceable. The fifth filter is internal to protect the motor. The four filters are: pre-filter cover, main filter, bin filter and exhaust filter.

## Cleaning the dust container filter (fig. J - M)

The dust container filter prevents dust and dirt from entering the motor housing. The filter is re-usable. There are two levels of filtration: pre-filter and main filter. To maintain efficient suction performance, the filter should be

cleaned every week, or whenever suction performance is noticeably reduced. The appliance is fitted with a bypass valve. When the filter is clogged, the operation of the valve is audible. This is normal and does not indicate a problem. Switch off the appliance and remove the plug from the socket before cleaning the filters.

- Remove the container (9) from the appliance (fig. J).
- Empty the container (fig. K).
- Remove the cartridge (28) from the container by turning it clockwise (fig. L).
- Remove the pre-filter cover (29) from the main filter (30).
- Shake off excess dust by tapping the filter into a dustbin.

**Warning!** Do not brush or use compressed air to clean the filter.

- Depending on its condition, rinse the outside of the filter with water. Allow the filter to dry for 24 hours before re-inserting it.

**Warning!** Do not wash the inside of the filter.

- Take out the filter (31) located right below the grid and brush off any loose dust before re-inserting it.
- Slide the pre-filter cover back over the main filter.
- Place the cartridge back in the container by turning it counterclockwise.
- Close the container.
- Re-insert the dust container into the appliance.

### **Cleaning the exhaust filter (fig. N)**

The exhaust filter gives a further filtration level. The filter is re-usable and should be cleaned regularly.

- Remove the lid (32).
- Take the exhaust filter (33) out.
- Brush any loose dust off the filter.
- Re-insert the filter.
- Close the lid.

### **Replacing the filters (fig. J - N)**

The container filter should be replaced every 6 to 9 months and whenever worn or damaged. When replacing the dust container filter, the pre-filter, main motor filter and the exhaust filters have to be replaced as well. Replacement filters sets (all 4 filters) are available from your Black & Decker dealer.

### **Replacing the pre-filter and main container filter (fig. J - M)**

- Proceed as described above to replace the filters.

### **Replacing the exhaust filter (fig. N)**

- Proceed as described above to replace the filter.

### **Storing the appliance**

**Warning!** When storing the appliance, switch the appliance off and unplug it.

- Make sure that the cord is fully rewound.
- Place the appliance in an upright position.
- Park the tube in the park position (23).
- Store the appliance in a dry location.

### **Maintenance**

Your BLACK+DECKER corded appliance has been designed to operate over a long period of time with a minimum of maintenance. Continuous satisfactory operation depends upon proper tool care and regular cleaning. Mains plug replacement.

If a new mains plug needs to be fitted:

- Safely dispose of the old plug.
- Connect the brown lead to the live terminal in the new plug.
- Connect the blue lead to the neutral terminal.

**Warning!** No connection is to be made to the earth terminal. Follow the fitting instructions supplied with good quality plugs. Recommended fuse: 10 A.



## Technical Data

<b>VM2040</b>	
Voltage	220-240V~
Power Input	2000W Max
Cable Length	5m
Dustbag Capacity	2.5L
Weight	6kg

### Protecting the environment



Separate collection. This product must not be disposed of with normal household waste.

Should you find one day that your BLACK+DECKER product needs replacement, or if it is of no further use to you, do not dispose of it with other household waste. Make this product available for separate collection.

- BLACK+DECKER provides a facility for recycling BLACK+DECKER products once they have reached the end of their working life. This service is provided free of charge. To take advantage of this service please return your product to any authorised repair agent who will collect them on our behalf.
- You can check the location of your nearest authorised repair agent by contacting your local BLACK+DECKER office at the address indicated in this manual. Alternatively, a list of authorized BLACK+DECKER repair agents and full details of our after-sales service and contact are available on the Internet at: [www.2helpU.com](http://www.2helpU.com).

### Australia & New Zealand

#### Stanley Black & Decker

[www.blackanddecker.com.au](http://www.blackanddecker.com.au)

[www.blackanddecker.co.nz](http://www.blackanddecker.co.nz)

Tel. 1800 338 002 (Aust) or

Tel. 0800 339 258 (NZ)