

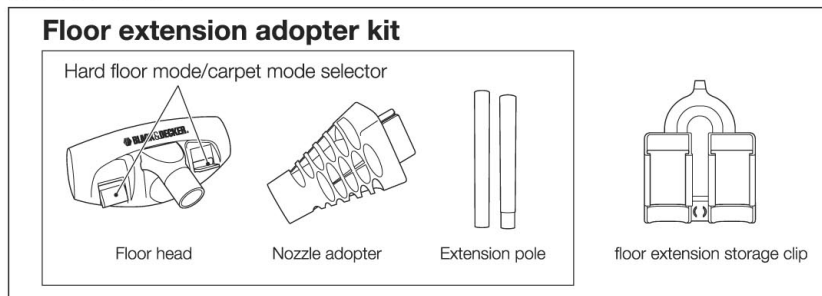
PV1405A

www.BlackandDecker.com

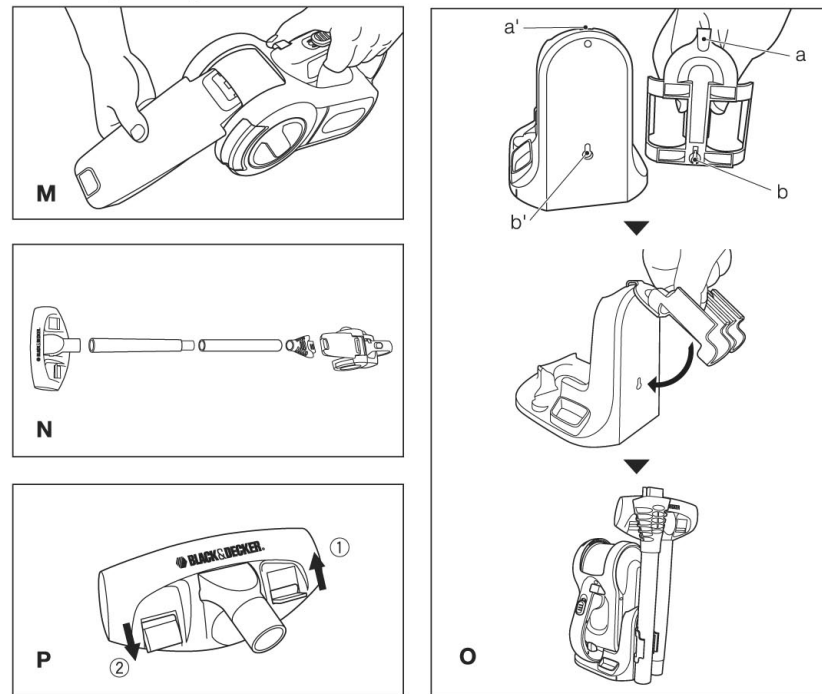
This manual is applicable for -A9, -XD & -KR only

Black & Decker Copy right 2008 (May 08)

Accessories



Assembly & adjustment



14.4V Pivoting Hand Vac PV1405A

Technical Data

Hand Vac	PV1405	
Voltage	V	14.4
Run time (approximate)	mins.	Low: 12 High: 10
Power (air watts)	W	32.4
Maximum suction power	mm/water	577
Maximum airflow	l/min.	1326
Dust bowl capacity	ml	350
Net weight	kg	1.7
Charger		
Approx. charging time	hr	7
Weight	kg	0.27

Intended Use

Your Black & Decker Dustbuster® hand held vacuum cleaner has been designed for light dry vacuum cleaning purposes. This product is intended for domestic use only.

Warning Symbols

⚠ Denotes risk of personal injury, loss of life or damage to the product in case of non-observance of the instructions in this manual.

Safety Instructions

⚠ **Warning!** When using battery-powered appliances, basic safety precautions, including the following, should always be followed, to reduce the risk of fire, leaking batteries, personal injury and material damage.

- Read this entire manual carefully before using the appliance.
- The intended use is described in this manual. The use of any accessory or attachment or the performance of any operation with this appliance other than those recommended in this instruction manual may present a risk of personal injury.
- Retain this manual for future reference.

Use Your Appliance

- **Do not place bowl inlet or outlet of your vac near eyes or ears when operating.**
- **Vacuum dry materials only.** Do not expose your vac to rain.
- **Do not operate without the filter bag in place.** Repair or replace a damaged bag promptly.
- **Do not overreach. Use extra caution when cleaning on stairs.** Keep proper footing and balance at all times.
- **Do not vacuum burning or smoking materials,** such as lit cigarette butts, matches or hot ashes.
- **Do not operate portable electric tools in a gaseous or explosive atmosphere.** Motors in these tools normally spark, and the sparks may ignite fumes.
- **Do not use your appliance to pick up toxic substances, flammable or combustible liquids** such as gasoline or use in areas where they may be present.
- **Do not allow to be used as a toy.** Close attention is necessary when used by or near children.
- **Use only as described in this manual.** Use only manufacturer's recommended attachments.
- If the vac is not working as it should, has been dropped, damaged, left outdoors, or dropped into water, return it to a service center.
- **Do not put any object into openings.** Do not use with any opening blocked; keep free of dust, lint, hair, and everything that may reduce airflow.
- **Keep hair, loose clothing, fingers, and all parts of body away from openings and moving parts.**
- **Do not handle charger or appliance with wet hands.**
- **Never pull the charger lead to disconnect the charger from the socket.** Keep the charger lead away from heat, oil and sharp edges.

- Do not insert accessories when the unit is running.

After Use

- **Unplug the charger before cleaning the charger or charging base.**
- **When not in use, the appliance should be stored in a dry place.**
- Children should not have access to stored appliances.

Inspection and Repairs

- **Before use, check the appliance for damaged or defective parts.** Check for breakage of parts, damage to switches and any other conditions that may affect its operation. **Do not use the appliance if any part is damaged or defective.**
- **Have any damaged or defective parts repaired or replaced by an authorized repair agent.**
- **Regularly check the charger lead for damage. Replace the charger if the lead is damaged or defective.**
- **Never attempt to remove or replace any parts other than those specified in this manual.**
- **Maintain your appliance with care.** Keep the bowl and fan area clean for best and safest performance. Follow the instruction for proper maintenance.
- **Do not attempt to repair your appliance.** To assure it's safety and reliability; repairs, maintenance and adjustments should be performed by Black & Decker authorized repair agents.

Battery and Charger

- **Never attempt to open the battery or charger.**
- **Do not expose the battery or charger to water.**
- **Do not incinerate the battery.**
- **Leaks from battery cells can occur under extreme conditions.** If the liquid, which is a 20-35% solution of potassium hydroxide, gets on the skin: (a) wash quickly with soap and water; or (b) neutralize with a mild acid such as lemon juice or vinegar. If the liquid gets into the eyes, flush them immediately with clean water for a minimum of 10 minutes. Seek medical attention.

Double Insulation

☐ The charger of this appliance is double insulated. Double insulation means that all the external metal parts are electrically insulated from the mains power supply. This is done by placing insulated barriers between the electrical and mechanical components so as to making unnecessary for the tool to be earthed. Note: Double insulation does not take the place of normal safety precautions when operating this tool. The insulation system is for added protection against injury resulting from a possible electrical insulation failure within the tool.

Electrical Safety

The electric motor has been designed for one voltage only. Always check that the power supply corresponds to the voltage on the rating plate. Never attempt to replace the charger unit with a regular mains plug.

Symbols on the Charger

Your charger may contain the following symbols:

- ☐ Your charger is double insulated; therefore no earth wire is required.
- ⚡ F Fail safe isolating transformer. The mains supply is electrically separated from the transformer output.
- 🌡 130 °C The charger automatically shuts off if the ambient temperature becomes too high. As soon as the ambient temperature has decreased, the charger will resume operating.
- 🏠 The charger is intended for indoor use only.
- 📖 Read the manual carefully before using the appliance.

Features (Fig. A)

1. Release latch for container door
2. Container door
3. Collector lock button
4. Two-speed on/off switch
5. Filter cleaning wheel
6. Charging indicator
7. Charging base
8. Dust collector extension
9. Dust collector
10. Upholstery brush (stored in underside of appliance)

Installation

Fitting The Charging Base To The Wall (Fig. B)

The charging base (7) can be placed on a worktop or fitted to the wall to provide a convenient storage and charging point for the appliance. When fixing to a wall, make sure that the fixing method is suitable for the wall type and is appropriate to the weight of the appliance.

⚠ **CAUTION:** Safety glasses should be worn any time a drill is being used. When drilling, take care to avoid any electrical wiring located behind the wall.

Assembly

Adjusting The Dust Collector (Fig. C & D)

- The dust collector (9) is stored under the appliance. To adjust for use, lift the appliance from the charging base.
- Press the collector lock button (3) and rotate the dust collector to the required position.
- Release the collector lock button to lock the dust collector in position.
- The dust collector can be extended by pulling the dust collector extension (8) until it locks into position.
- The extension can be retracted by pressing the button (11) and pushing the extension back into the dust collector.
- The dust collector should be returned to the storage position under the appliance after use and while charging the appliance.

Fitting & Removing The Accessories (Fig. E)

- The appliance is supplied with an upholstery brush (10) for furniture and stairs.
- To fit the upholstery brush, take it from the appliance and insert it into the dust collector.
- To remove the accessory, simply pull it out from the dust collector and put it back to the holder.

Use

- Before first use, the battery must be charged for at least 16 hours.

- Place the appliance on the charging base whenever it is not in use.

Charging The Battery (Fig. F)

- Make sure that the appliance is switched off. The battery will not be charged with the on/off switch in the on position.
- Place the appliance on the charging base (7) as shown.
- Plug in the charger. Switch on at the mains. The charging indicator (6) will be lit.
- Leave the appliance to charge for at least 16 hours.

While charging, the charger may become warm. This is normal and does not indicate a problem. The appliance can be left connected to the charger indefinitely. The charging indicator (6) will be lit as long as the appliance is connected to the plugged-in charger.

Warning! Do not charge the battery at ambient temperatures below 4 °C or above 40 °C.

Switching On And Off (Fig. G)

- To switch the appliance on, slide the on/off switch (4) forward to position 1.
- For full power, slide the on/off switch (4) forward to position 2.
- To switch the appliance off, slide the on/off switch (4) back to position 0.

Optimizing The Suction Force (Fig. H)

- In order to keep the suction force optimized, the filters must be cleared regularly during use.
- Rotate the wheel (5) a few turns to shake out dust clogging the filters (12 & 13).

Fitting the floor extension adopter kit

- Prior to assembly, make sure the unit nozzle to be adjusted to cleaning position (fig. M).
- Connect the floor extension adopters (fig. N).

Fitting the storage clip

- Floor extension adopter can be stored on charger with floor extension storage clip (fig. O).
- To fit the storage clip, hang the hook (a) onto the top of charger base (a').
- Insert the ratch (b) into the hole (b') to firmly set.
- Clip the extension poles for compact storage.

Hard floor mode/ carpet mode selector (fig. P)

- To select the hard floor mode, flap down the right side of selector ①.
- To select the carpet mode, flap down the left side of selector ②.

Maintenance

Warning! Regularly clean the filters (12 & 13).

Cleaning The Dust Container And Filters (Fig. I-L)

The filters are re-usable and should be cleaned regularly.

- Press the release latch (1) and open the container door (2) (fig. I).
- Empty the dust container (Fig. J).
- Remove the filters (12 & 13) by twisting them counterclockwise (fig. K).
- Brush any loose dust off the filters.
- Wash the filters in warm, soapy water (fig. L).
- Make sure that the filters are dry.
- Refit the filters (12 & 13) on to the appliance, twisting them clockwise until they lock into place.
- Close the container door (2). Make sure that the release latch (1) clicks into place.

Warning! Never use the appliance without the filters.

Optimum dust collection will only be achieved with clean filters.

Replacing The Filters

- The filters should be replaced every 6 to 9 months and whenever worn or damaged. Replacement filters are available from your Black & Decker dealer (cat. no. PVF100):
- Remove the old filters as described above.
- Fit the new filters as described above.

Important

To ensure product SAFETY and RELIABILITY, repairs, maintenance and adjustment (other than those listed in this manual) should be performed by authorized service centers or other qualified organizations, always using identical replacement parts. Unit contains no user serviceable parts inside.

Trouble Shooting Guide

If the product does not work, check the following:

- The power supply plug was correctly plugged in for recharge (it feels slightly warm to the touch).
- The power supply plug is not damaged and is correctly attached to the appliance.
- The power supply plug into a working electrical outlet.

Protecting The Environment

♻ Separate collection. This product must not be disposed of with normal household waste.

Should you find one day that your Black & Decker product needs replacement, or if it is of no further use to you, do not dispose of it with household waste. Make this product available for separate collection.

♻ Separate collection of used products and packaging allows materials to be recycled and used again. Re-use of recycled materials helps prevent environmental pollution and reduces the demand for raw materials.

If necessary, contact your local municipality for proper disposal instructions in your city/town.

Service Information

Black & Decker offers a full network of company-owned and authorized service locations throughout Asia. All Black & Decker Service Centers are staffed with trained personnel to provide customers with efficient and reliable power tool service.

Whether you need technical advice, repair, or genuine factory replacement parts, contact the Black & Decker location nearest to you.

Notes

- Black & Decker's policy is one of continuous improvement to our products and, as such, we reserve the right to change product specifications without prior notice.
- Standard equipment and accessories may vary by country.
- Product specifications may differ by country.
- Complete product range may not be available in all countries. Contact your local Black & Decker dealers for range availability.

