



SCMTSA-375S

Operation and Maintenance Manual

3/8" SCMTSA-375S



WARNING

To reduce the risk of injury, read and understand these safety warnings and instructions before using the tool. Keep these instructions with the tool for future reference. If you have any questions, contact your **SIDCHROME** representative or distributor.



3/8" Air Ratchet



TABLE OF CONTENTS

Introduction	2
Safety Instructions	3
Specifications	4
Getting Started	5
Tool Components	6
Contact Information	8

INTRODUCTION

The **Sidchrome™ SCMTSA-375S** is a precision-built tool, designed for professionals, for torque assembly and disassembly of threaded fasteners. This tool will deliver efficient, dependable service when used correctly and with care. As with any fine power tool, for best performance the manufacturer's instructions must be followed. Please study this manual before operating the tool and understand the safety warnings and instructions. The instructions on installation, operation and maintenance should be read carefully, and the manuals kept for reference. NOTE: Additional safety measures may be required because of your particular application of the tool. Contact your **Sidchrome** representative or distributor with any questions concerning these tools and their use.

Sidchrome
82 Taryn Drive
Epping Victoria 3076
Australia

Customer Service Phone Number
1 800 338 002





WARNING

IMPORTANT SAFETY INFORMATION ENCLOSED.
READ THIS MANUAL BEFORE OPERATING THE MACHINE.

FAILURE TO OBSERVE THE FOLLOWING WARNINGS COULD RESULT IN INJURY.



Do not use damaged, frayed or deteriorated air hoses and fittings.



Air powered tools can vibrate in use. Vibration, repetitive motions or uncomfortable positions may be harmful to your hands and arms. Stop using any tool if discomfort, tingling feeling or pain occurs. Seek medical advice before resuming use.



Do not carry the tool by the hose.



Keep body stance balanced and firm. Do not overreach when operating this tool.



Always wear hearing protection when operating this tool.



Always turn off the air supply and disconnect the air supply hose before installing, removing or adjusting any accessory on this tool, or before performing any maintenance on this tool.



Always wear eye protection when operating or performing maintenance on this tool.



Operate at 90 psig (6.2 bar / 620 kPa) Maximum air pressure.

GENERAL SAFETY INSTRUCTIONS



WARNING

- Always wear ANSI Z87.1 eye protection when operating or performing maintenance on this tool. Everyday eye glasses are not safety glasses
- Always wear hearing protection when operating this tool
- Keep hands, loose clothing and long hair away from rotating end of tool
- Anticipate and be alert for sudden changes in motion during start up and operation of any power tool
- Keep body stance balanced and firm. Do not overreach when operating this tool
- Do not operate this tool for long periods of time. Vibration caused by tool action may be harmful to your hands and arms. Stop using any tool if discomfort, tingling feeling or pain occurs. Seek medical advice before resuming use
- Use impact rated accessories recommended by **Sidchrome** only. Inspect accessories before use. Do not use cracked or damaged accessories
- Do not operate this tool in the presence of flammable liquids, gasses, dust, or explosive atmospheres
- This tool is not insulated against electric shock
- Always turn off the air supply and disconnect the air supply hose before installing, removing or adjusting any accessory on this tool, or before performing any maintenance on this tool
- For safety, top performance, and maximum durability of parts, operate this tool at 90 psig (6.2 bar / 620 kPa) maximum air pressure at the inlet with 3/8" (10mm) inside diameter air supply hose
- Do not use damaged, frayed or deteriorated air hoses and fittings
- Do not lubricate tools with flammable or volatile liquids such as kerosene, diesel or jet fuel
- Do not remove any labels. Replace any damaged label





SPECIFICATIONS

Closed head for
reduced maintenance
and longer life

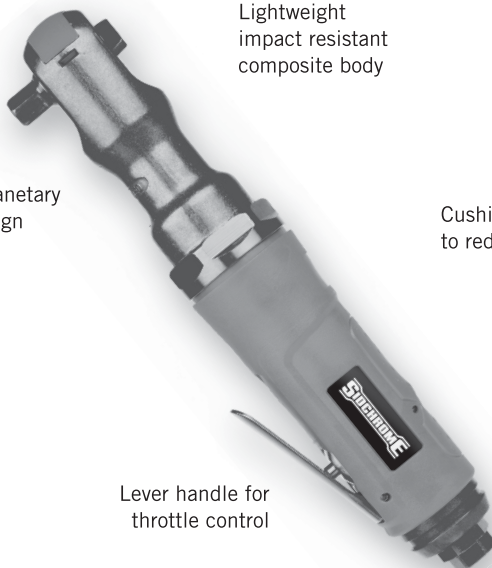
Lightweight
impact resistant
composite body

Triple planetary
gear design

Cushion grip
to reduce vibration

Lever handle for
throttle control

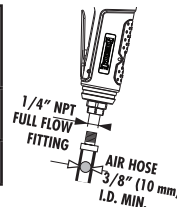
Rotating
air inlet



SPECIFICATIONS

Model #	Square Drive in	Max Torque ft-lbs / NM	Noise Level					Vibration Level	
			Pressure dB(A)		Power dB(A)		Pressure dB(C)		m/s ²
SCMTSA-375S	3/8	80 / 108	98.9	3*	109.9	3*	98.7	3*	4.64 0.95**

Model #	Free Speed	Average Air Consumption	Working Pressure	Weight	Dimensions
	rpm	cfm / l / min	psi / bar	lbs / kg	in / mm
SCMTSA-375S	280	4.0 / 113	90 / 6.2	2.7 / 1.2	10.3 x 2.3 x 1.7 / 261 x 58 x 43



* = measurement uncertainty in dB(A)

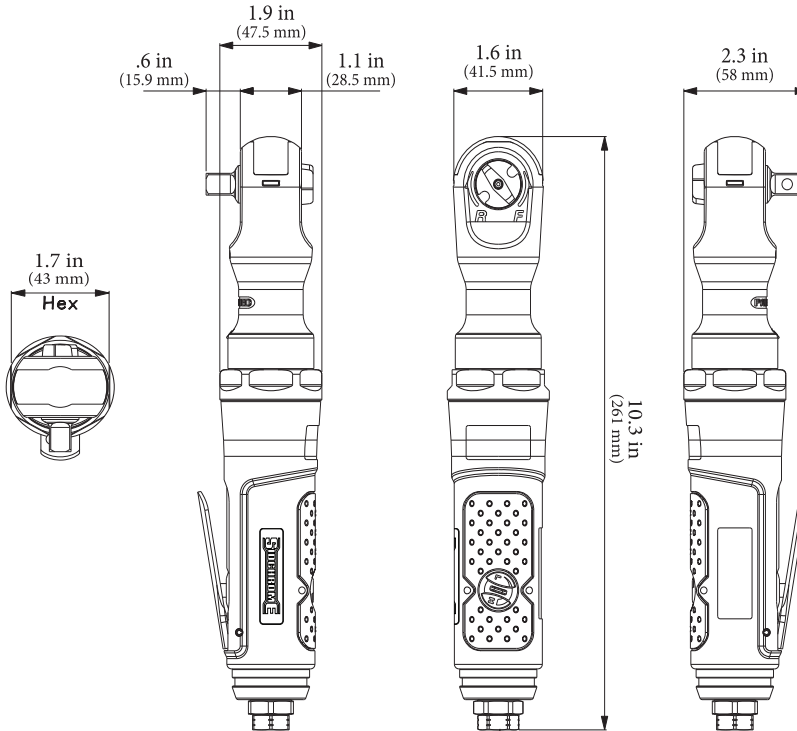
** = measurement uncertainty in m/s²





GETTING STARTED

- Always operate, inspect and maintain this tool in accordance with all regulations (local, state, federal and country) that may apply to hand-held / hand-operated pneumatic tools
- Be sure all hoses and fittings are the correct size and are tightly secured
- Always use clean, dry air at 90 psig maximum air pressure. Dust, corrosive fumes and/or excessive moisture can ruin the motor of an air tool
- The use of a hose whip is recommended. A coupler connected directly to the air inlet increases tool bulk and decreases tool maneuverability
- For maximum performance, the coupler on the wall should be the next size larger than the coupler used on the tool. The coupler closest to the tool should not be less than the proper air supply hose size



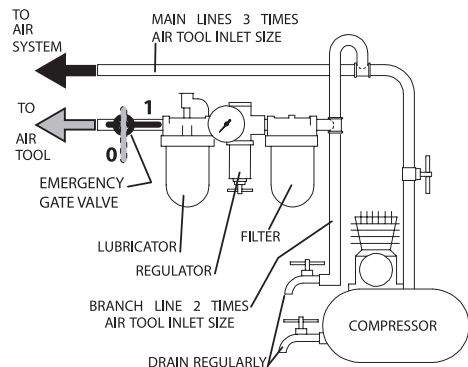
PLACING TOOL IN SERVICE

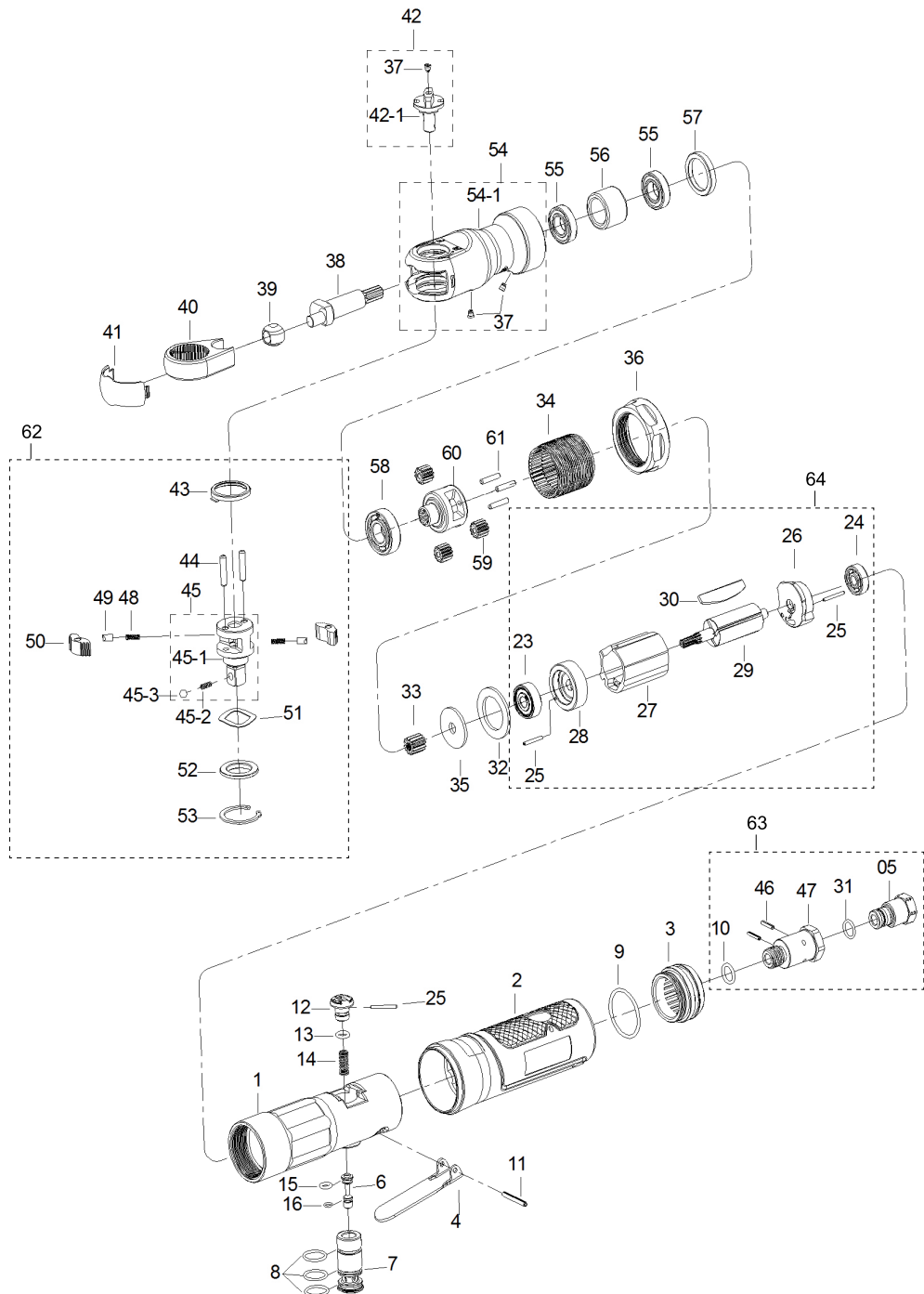
LUBRICATION



Always use an air line lubricator with this tool. After every eight hours of operation, if a lubricator is not used on the compressed air network, inject 1/2 to 1 cc of approved air tool oil through the tool's inlet connection. Recommended air tool oil available from Sidchrome SCMTSATO-250.

After every forty-eight hours of operation, or as experience indicates, inject about 4 cc of approved pneumatic grease into the grease fitting.







ITEM #	PART #	DESCRIPTION	QTY
	SCMTSA-375S	3/8" Standard Air Ratchet	
1	31H200023	Motor Housing	1
2	31H200035	Rubber Grip	1
3	31Y200074	Exhaust Deflector	1
4	31P200005	Trigger	1
6	31P200010	Throttle Valve Plunger	1
7	31P200011	Air Regulator	1
11	31R200270	Spring Pin	1
12	31P200012	Air Regulator	1
25	31R200274	Spring Pin	1
32	31R200275	Washer	1
33	31G200026	Pinion Gear	1
34	31G200027	Ring Gear	1
35	31R200276	Washer	1
36	31H200025	Coupling Nut	1
38	31D200057	Crank shaft	1
39	31D200058	Drive Bushing	1
40	31D200059	Ratchet Yoke	1
41	31Y200075	Ratchet Housing Cover	1
43	31R200277	Thrust Washer	1
51	31R200282	Wave Washer	1
52	31R200287	Thrust Washer	1
53	31R200288	Retaining Ring	1
55	31R200099	Ball Bearing	2
56	31R200283	Spacer	1
57	31R200284	Bushing	1
58	31R200285	Ball Bearing	1
59	31G200028	Planet Gear	3
60	31G200029	Work Spindle (incl.61(3))	1
42	31Y100001	REVERSE KNOB ASSEMBLY	1
42-1	Pre-Assembled	Reverse Knob	1
37	Pre-Assembled	Grease Fitting	1
45	31D100028	RATCHET ANVIL ASSEMBLY	1
45-1	Pre-Assembled	Ratchet Anvil	1
45-2	Pre-Assembled	Steel Ball Spring	1
45-3	Pre-Assembled	Steel Ball	1
54	31H200026	RATCHET HOUSING	1
54-1	Pre-Assembled	Ratchet Housing	1
37	Pre-Assembled	Grease Fitting	2

ITEM #	PART #	DESCRIPTION	QTY
62	31K100106	3/8" RATCHET ANVIL KIT	1
45	Pre-Assembled	Ratchet Anvil Assembly	1
43	loose	Thrust Washer	1
44	Pre-Assembled	Pin	2
48	Pre-Assembled	Ratchet Spring	2
49	Pre-Assembled	Ratchet Lock Pin	2
50	Pre-Assembled	Ratchet Pawl	2
51	loose	Wave Washer	1
52	loose	Thrust Washer	1
53	loose	Retaining Ring	1
63	31K100109	INLET FOR ARS	1
5	Pre-Assembled	Air Inlet	1
10	Pre-Assembled	O-Ring	1
31	Pre-Assembled	O-Ring	1
46	Pre-Assembled	Spring Pin	2
47	Pre-Assembled	Air Inlet connector	1
64	31K100111	MOTOR FOR ARS	1
23	Pre-Assembled	Ball Bearing	1
24	Pre-Assembled	Ball Bearing	1
25	Pre-Assembled	Spring Pin	2
26	Pre-Assembled	Rear End Plate	1
27	Pre-Assembled	Cylinder	1
28	Pre-Assembled	Front End Plate	1
29	Pre-Assembled	Rotor	1
30	Pre-Assembled	Rotor Blade	4
8	31K100113	TUNE-UP KIT	1
9	O-Ring	O-Ring	3
13	O-Ring	O-Ring	1
14	Spring	Spring	1
15	O-Ring	O-Ring	1
16	O-Ring	O-Ring	1



SIDCHROME
82 TARYN DRIVE
EPPING VICTORIA 3076
AUSTRALIA

Customer Service Phone Number
1 800 338 002

Copyright © 2014 SIDCHROME

Manual #30L200206