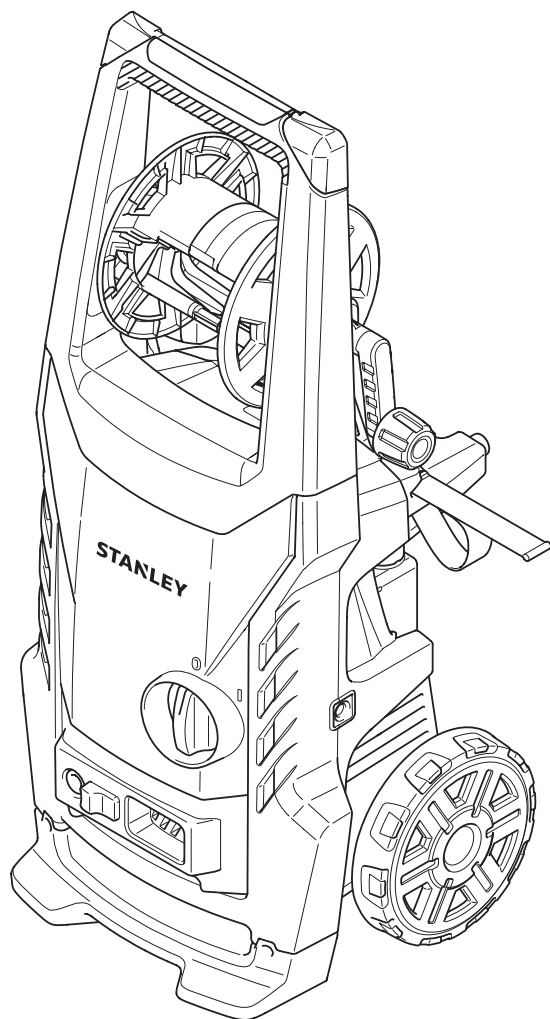
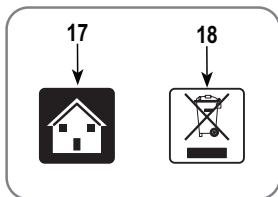


STANLEY



SW19
SW21

FIG. A



► For house hold use only

Note: The diagrams are for reference, the product may change in appearance or specifications without notice.

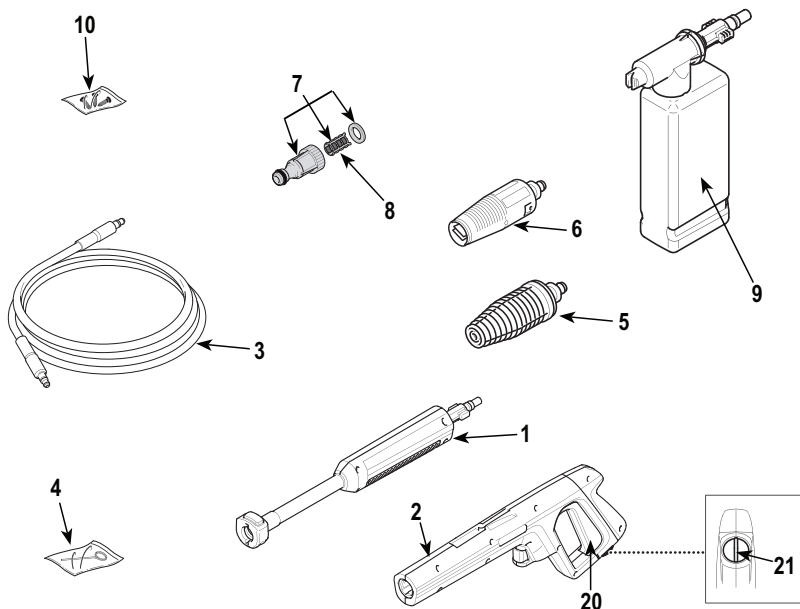
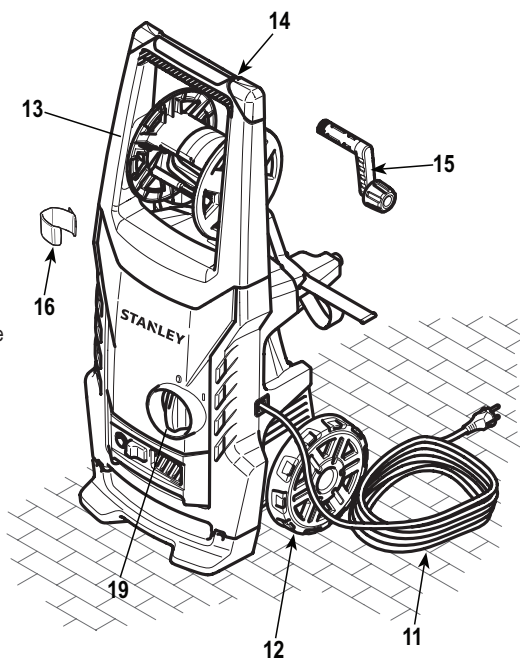


FIG. B

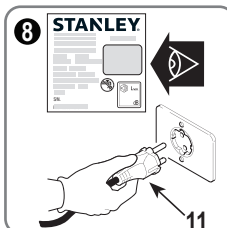
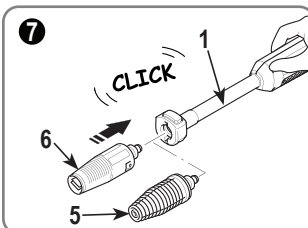
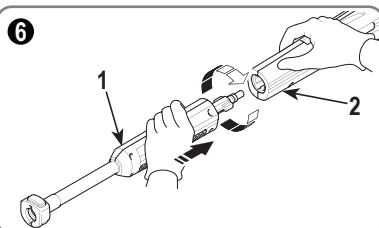
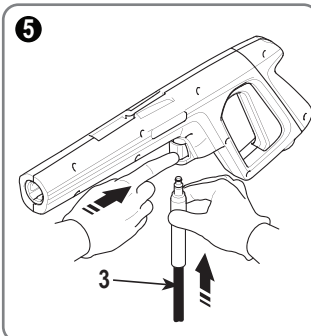
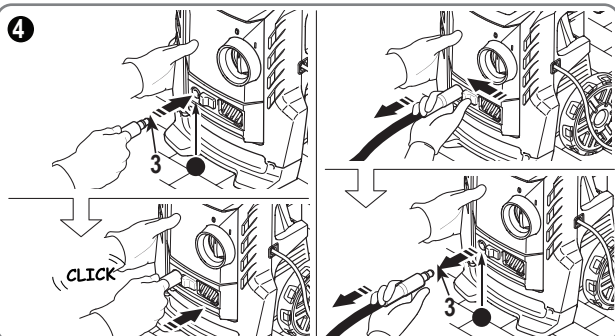
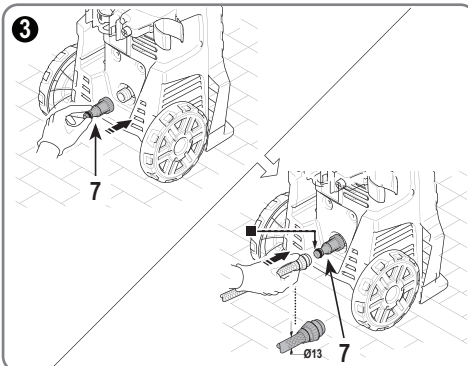
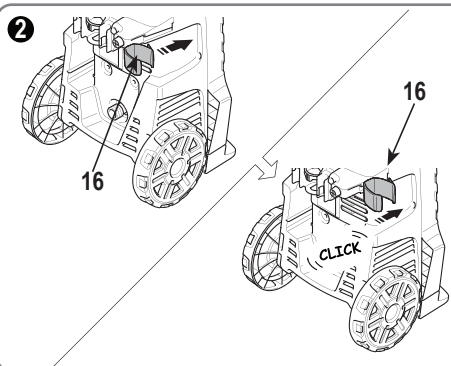
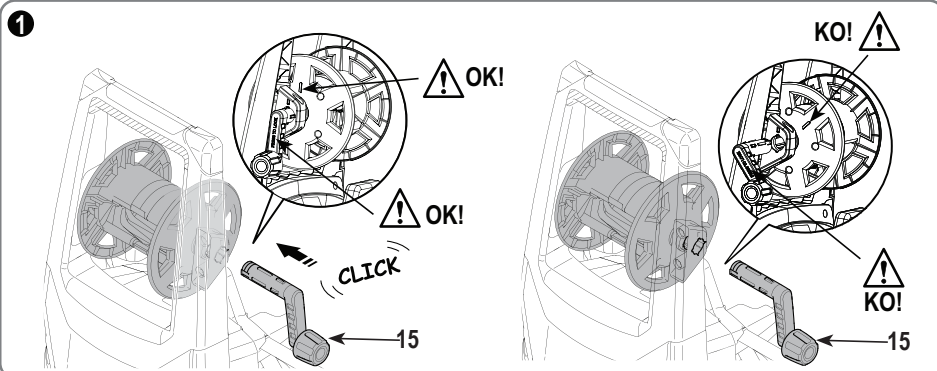




FIG. E

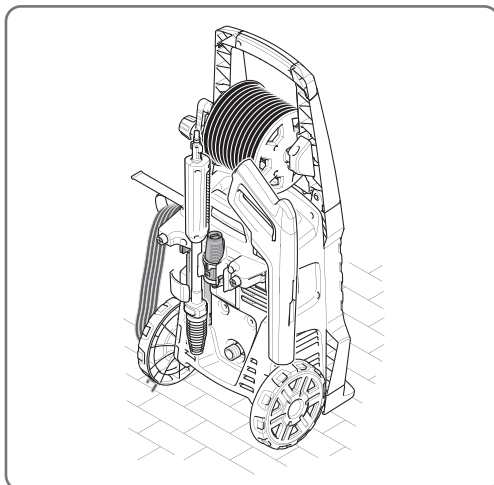
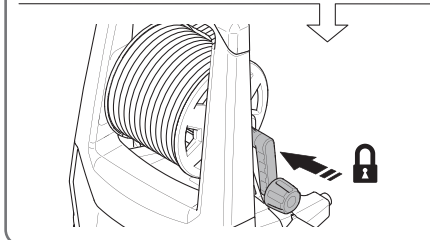
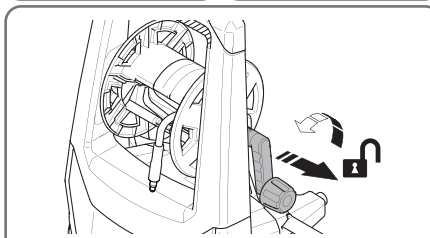
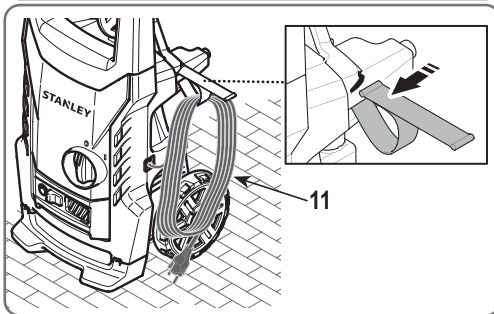
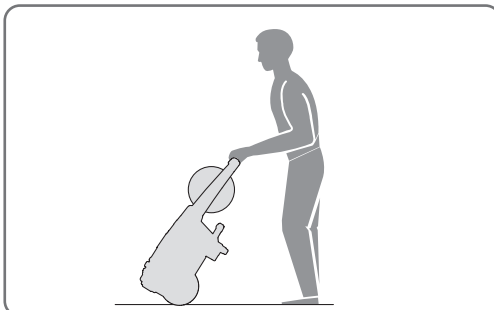
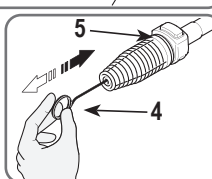
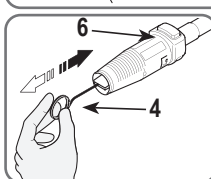
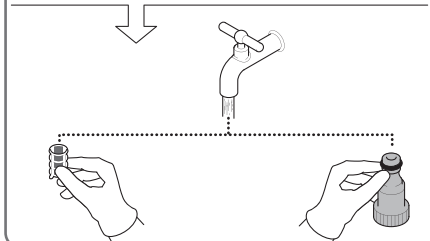
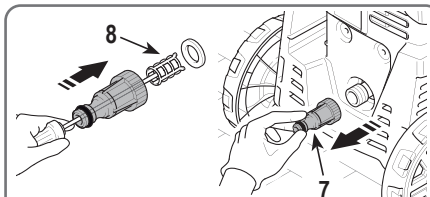


FIG. F

	Volt	1 ÷ 25 m	25 ÷ 50 m
	220-240 V~ 50 Hz	3 x 1,5 mm ²	3 x 2,5 mm ²

Note: The diagrams are for reference, the product may change in appearance or specifications without notice.

⚠ CAUTION! READ THE INSTRUCTIONS BEFORE USING THE MACHINE

DO NOT RETURN THIS PRODUCT TO THE STORE, first contact your local STANLEY office or nearest authorized service center.

Use of the manual

The manual forms an integral part of the appliance and should be kept for future reference. Please read it carefully before installing/ using the unit. If the appliance is sold, the seller must pass on this manual to the new owner along with the appliance.

SAFETY INSTRUCTION

General power tool safety warnings



Warning! Read all safety warnings and all instructions. Failure to follow the warnings and instructions listed below may result in electric shock, fire and/or serious injury.

Save all warnings and instructions for future reference.

The term "power tool" in all of the warnings listed below refers to your mains operated (corded) power tool or battery operated (cordless) power tool.

1. Safety "Must Nots"

- a. Explosion or poisoning hazard.** Do not use the appliance with inflammable or toxic liquids, or any products which are not compatible with the correct operation of the appliance.
- b. Injury hazard.** Do not direct the water jet towards people or animals.
- c. Electric shock hazard.** Do not direct the water jet towards the unit itself, electrical parts or towards other electrical equipment
- d. Short circuit hazard.** Do not use the appliance outdoors in case of rain.
- e. Injury hazard.** Do not allow children or incompetent persons to use the appliance.
- f. Electric shock hazard.** Do not touch the plug and/or socket with wet hands.
- g. Electric shock and short circuit hazard.** Do not use the appliance if the electrical cable is damaged.
- h. Explosion hazard.** Do not use the appliance if the high pressure hose is damaged.
- i. Accident hazard.** Do not jam the trigger in the operating position.
- j. Accident hazard.** Check that the data plates are axed to the appliance, if not, inform your dealer. Units without plates must not be used as they are unidentifiable and potentially dangerous.
- k. Explosion hazard.** Do not tamper with or alter the calibration of the safety valve.

l. Hazardous alteration of operating performance.

Do not alter the original diameter of the spray head nozzle.

m. Accident hazard. Do not leave the appliance unattended.

n. Short circuit hazard. Do not move the appliance by pulling on the electrical cable.

o. Make sure that cars do not drive over the high pressure hose.

2. Safety "Musts"

a. Short circuit hazard. All electrical conductors must be protected against the water jet.

b. Electric shock hazard. The appliance must only be connected to an adequate power supply in compliance with all applicable regulations.

- Use of a safety residual current circuit-breaker (R.C.C.B.) will provide additional protection for the operator (30mA).

c. Injury hazard. The high pressure may cause materials to bounce o surfaces at speed; therefore protective clothing and safety goggles must be worn.

d. Accidental start-up hazard. Before doing work on the appliance, remove the plug.

e. Injury hazard. Before pressing the trigger, grip the gun rmly to counteract the recoil.

f. Contamination hazard. Comply with the requirements of the local water supply company. According to DIN 1988, the appliance may only be connected to the mains drinking water supply if a backow preventer valve with drain facility is installed in the supply hose. Water that has flowed through backflow preventers is considered to be non-potable.

g. Accident hazard. Maintenance and/or repair of electrical components must be carried out by qualified and Authorized STANLEY staff for the warranty to take effect. If the supply cord is damaged, it must be replaced by the manufacturer, an Authorized STANLEY service centre or an equally qualified person in order to avoid a hazard. If the supply cord is replaced by an equally qualified person, but not Authorized by STANLEY, the warranty will lose effect.

h. Injury hazard. Discharge residual pressure before disconnecting the unit hose.

i. Accident hazard. Before using the appliance, check every time that the screws are fully tightened and that there are no broken or worn parts.

j. Explosion and electric shock hazard. Only use detergents which will not corrode the coating materials of the high pressure hose/electrical cable.

k. Injury hazard. Ensure that all people or animals keep a minimum distance of 16yd. (15m) away.

3. Improper use

- ▶ Use by unskilled persons or those who have not read and understood the instructions in the manual is forbidden.
- ▶ The equipment is not designed to be used by people (including children) with physical, sensory or mental capabilities reduced or no experience or knowledge, unless they are supervised or instructed in the use by a person responsible for their safety.
- ▶ It will be monitored to ensure that children do not play with the appliance.
- ▶ The introduction of inflammable, explosive and toxic liquids into the appliance is prohibited.
- ▶ Use of the appliance in a potentially inflammable or explosive atmosphere is forbidden.
- ▶ The use of non-original spare parts and any other spare parts not specifically intended for the model in question is prohibited
- △ **Warning!** All modifications to the appliance are prohibited. Any modifications made to the appliance shall render the Declaration of Conformity null and void and relieve the manufacturer of all liability under civil and criminal law.
- △ **Warning!** This machine has been designed for use with the cleaning agent supplied or recommended by the manufacturer. The use of other cleaning agents or chemicals may adversely affect the safety of the machine.
- △ **Warning!** High pressure jets can be dangerous if subject to misuse. The jet must not be directed at persons, live electrical equipment or the machine itself.
- △ **Warning!** Do not use the machine within range of persons unless they wear protective clothing.
- △ **Warning!** Do not direct the jet against yourself or others in order to clean clothes or foot-wear.
- △ **Warning!** Risk of explosion – Do not spray flammable liquids.
- △ **Warning!** High pressure cleaners shall not be used by children or untrained personnel.
- △ **Warning!** High pressure hoses, fittings and couplings are important for the safety of the machine. Use only hoses, fittings and couplings recommended by the manufacturer.
- △ **Warning!** To ensure machine safety, use only original spare parts from the manufacturer or approved by the manufacturer.

- △ **Warning!** Water that has flowed through backflow preventers is considered to be nonpotable.
- △ **Warning!** Do not use the machine if a supply cord or important parts of the machine are damaged, e.g. safety devices, high pressure hoses, trigger gun.
- △ **Warning!** Incorrect fuels shall not be used as they may prove hazardous.
- △ **Warning!** Do not use near people except that they use protective clothing.
- △ **Warning!** Inadequate extension cords can be dangerous. If an extension cord is used, it shall be suitable for outdoor use, and the connection has to be kept dry and off the ground. It is recommended that this is accomplished by means of a cord reel which keeps the socket at least 60mm above the ground.
- △ **Warning!** Do not use combustion engine powered machines indoors unless adequate ventilation is assessed by national labour authorities.
- △ **Warning!** Ensure that any exhaust emissions are not in the vicinity of air intakes.
- △ **Warning!** For gas or oil-heated machines it is important to provide adequate ventilation and make sure that the flue gases are properly discharged.
- △ **Warning!** Always switch off the mains disconnecting switch when leaving the machine unattended.
- △ **Warning!** This hose contains electrical connections: do not use it to collect water and do not immerse in water for cleaning.

4. Service

- a. **Have your power tool serviced by a qualified repair person using only identical replacement parts.** This will ensure that the safety of the power tool is maintained.

5. Electrical safety

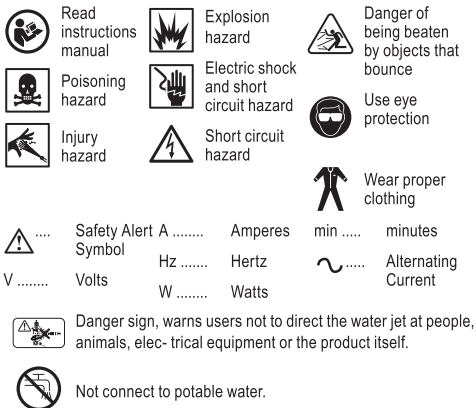


Warning! If the power cord is damaged, it must be replaced by the manufacturer, authorized STANLEY Service Center or an equally qualified person in order to avoid damage or injury. If the power cord is replaced by an equally qualified

person, but not authorized by STANLEY, the warranty will not be valid..

LABELS ON TOOL

The following symbols are shown on the tool along with the date code:



6. Nozzle
7. Adapter
8. Water filter
9. Detergent kit
10. Screws
11. Electric cable with plug
12. Wheels
13. Hose reel
14. Handle
15. Lever
16. Brackets

Starter device (19)

The starter device prevents accidental use of the appliance.

⚠ Caution! Safety devices:

Do not tamper with or adjust the safety valve setting.

- ▶ **Safety valve and/or pressure limiting valve.** The safety valve is also a pressure limiting valve.

When the gun trigger is released, the valve opens and the water recirculates through the pump inlet or is discharged onto the ground.

- ▶ **Thermostat valve (where fitted)**

If the water temperature exceeds the temperature set by the manufacturer, the thermostat valve discharges the hot water and draws in an amount of cold water equal to the amount of water discharged, until the correct temperature is restored.

- ▶ **Safety catch (21):** prevents accidental spraying of water.
- ▶ **Overload cutout:** stops the appliance in case of overload.

TECHNICAL INFORMATION

INTENDED USE

This appliance has been designed for individual use for the cleaning of vehicles, machines, boats, masonry, etc, to remove stubborn dirt using clean water and biodegradable chemical detergents.

Vehicle engines may be washed only if the dirty water is disposed of as per regulations in force.

Intake water temperature: See data plate on the appliance.

- ▶ **Intake water pressure:** min. 0.1 MPa - max. 1 MPa.
- ▶ **Operating ambient temperature:** Above 0 °C.

The appliance is compliant with the IEC 60335-1 and IEC 60335-2-79 standards.

OPERATOR

The symbol illustrated in **Fig. A** identifies the appliance's intended operator (professional or non-professional).

MAIN COMPONENTS (Fig. A)

1. Lance
2. Gun with safety catch
3. High pressure hose
4. Nozzle cleaning tool
5. Rotating nozzle kit

INSTALLATION (Fig. B)

Assembly

⚠ **Warning!** All installation and assembly operations must be performed with the appliance disconnected from the mains power supply.

The assembly sequence is illustrated in **Fig. B**.

Fitting the rotating nozzle

The rotating nozzle kit delivers greater washing power.

Use of the rotating nozzle may cause a reduction in pressure of 25% compared to the pressure obtained with the adjustable nozzle. However, the rotating nozzle kit delivers greater washing power due to the rotation of the water jet.

Electrical connection

⚠ **Warning!** Check that the electrical supply voltage and frequency (V/Hz) correspond to those on the appliance data plate (**Fig. B8**).

Use of extension cables: Use cables and plugs with "IPX5" protection level. The cross-section of the extension cable should be proportionate to its length; the longer it is, the

greater its cross-section should be.

Water supply connection

⚠ **Caution!** Only clean or filtered water should be used for intake. The delivery of the water intake tap should be equal to that of pump capacity.

Place the appliance as close to the water supply system as possible.

Connection points:

- Water outlet (OUTLET)
- Water inlet with filter (INLET)

Connection to the mains water supply

The appliance may only be connected directly to the mains drinking water supply if the supply hose is fitted with a back-flow preventer valve as per current regulations in force. Make sure that the hose is at least Ø 13 mm, that it is reinforced and that it is not more than 25 m long.

ADJUSTMENT INFORMATION (Fig. C)

- ▶ **Adjusting the spray nozzle (for models with this feature)** Water flow is adjusted by regulating the nozzle (6).
- ▶ **Adjusting the detergent** To deliver detergent at the correct pressure, set the nozzle (6) on "■" or fit the detergent kit (9) (where available) as shown.

USE OF THE APPLIANCE (Fig. D) CONTROLS

Starter device (19)

Set the starter switch on (ON/I) to:

- a. Start the motor (In models without TSS device);
- b. Set the motor ready to start (In models with TSS device). If there is a pilot light on the starter device, it should light up. Set the starter device switch on (OFF/0) to stop the appliance. If there is a pilot light on the starter device, it should go out.
- ▶ Water jet control lever (20).

⚠ **Warning!** During operation the appliance must be positioned as shown in Fig. D on a firm, stable surface.

Start-up (see Fig. D)

1. Turn on the water supply tap fully.
2. Release the safety catch (21).
3. Depress the gun trigger for a few seconds and start up the appliance using the starter device (ON/I).

⚠ **Warning!** Before starting up the appliance check that it is receiving water correctly; use of the appliance without water

will damage it. Do not cover the ventilation grilles when the appliance is in use.

TSS Models - In TSS models with automatic delivery flow cut-o system:

- a. **When the gun trigger is released**, the dynamic pressure automatically cuts out the motor;
- b. **When the gun trigger is depressed**, the automatic drop in pressure starts the motor and the pressure is restored after a very slight delay;
- c. **If the TSS is to function correctly all gun trigger releasing and depressing operations**, must be at least 4 - 5 seconds apart.

To prevent damage to the appliance, do not allow it to operate dry and check that it is properly supplied with water. For models without TSS, to prevent damage to the appliance due to an increase in water temperature, do not cut off the jet of water for more than 5 minutes with the appliance running.

Stopping

1. Set the starter device switch on (OFF/0).
2. Depress the gun trigger and discharge the residual pressure inside the pipes.
3. Engage the safety catch (21).

Restarting

1. Release the safety catch (21).
2. Depress the gun trigger and discharge the residual air inside the pipes.
3. Set the starter device on (ON/I).

Storage

1. Turn o the water supply tap.
2. Discharge the residual pressure from the gun until all the water has come out of the appliance.
3. Switch the appliance off (OFF/0).
4. Remove the plug from the socket.
5. Drain and wash out the detergent tank at the end of the working session. To wash out the tank, use clean water instead of the detergent.
6. Engage the gun safety catch (21).

Recommended cleaning procedure

Dissolve dirt by applying the detergent mixed with water to the surface while still dry. When dealing with vertical surfaces work from the bottom upwards. Leave the detergent to act for 1-2 minutes but do not allow the surface to dry. Starting from the bottom, use the high pressure jet at a minimum distance of 30cm. Do not allow the rinse water to run onto unwashed surfaces. In some cases, scrubbing with brushes is needed to remove dirt. High pressure is not always the best solution for good washing results, since it may damage some surfaces. The finest adjustable nozzle jet setting or the rotopower nozzle should not be used on delicate

or painted parts, or on pressurised components (e.g tyres, inflation valves, etc.). Effective washing depends on both the pressure and volume of the water used, to the same degree.

MAINTENANCE (FIG. E)

Any maintenance operations not covered by this chapter should be carried out by an authorized sales and service centre.

⚠ **Warning!** Always disconnect the plug from the power socket before carrying out any work on the appliance.

Cleaning the nozzle

1. Disconnect the lance from the nozzle.
2. Remove any dirt deposits from the nozzle hole using the tool (4).

Cleaning the filter

Inspect the inlet filter (8) and detergent filter (if fitted) before each use, and clean in accordance with the instructions if necessary.

Unjamming the motor (On models with this feature)

In case of lengthy stoppages, limescale sediments may cause the motor to seize. To unjam the motor, turn the drive shaft with a tool.

End-of-season storage

reat the appliance with non-corrosive, non-toxic antifreeze before storing it away for winter. Put the appliance in a dry place, protected from frost.

STORAGE AND TRANSPORTATION (Fig. E)

Store the accessories as shown in Fig. E.

Transport the machine as shown in Fig. E.

HOW TO AVOID DAMAGING SURFACES



⚠ **Warning!**

- ▶ Using the appliance to wash tyres may damage the tyre and can be dangerous.
- ▶ Never point the high pressure jet straight at the tyre.
- ▶ Always use the appliance at the lowest pressure setting when cleaning in the vicinity of wheels and tyres.
- ▶ Never use the "Turbo Lance" for washing any part of the vehicle.
- ▶ For further information refer to section: "Recommended cleaning procedure".

PROTECTING THE ENVIRONMENT



Separate collection. This product must not be disposed of with normal household waste. Should you find one day that your STANLEY product needs replacement, or if it is of no further use to you, do not

dispose of it with household waste. Make this product available for separate collection.



Separate collection of used products and packaging allows materials to be recycled and used again. Re-use of recycled materials helps prevent environmental pollution and reduces the demand for raw materials. Local regulations may provide for separate collection of electrical products from the household, at municipal waste sites or by the retailer when you purchase a new product.

⚠ **Important!** To ensure product **SAFETY** and **RELIABILITY**, repairs, maintenance and adjustment (other than those listed in this manual) should be performed by authorized service centers or other qualified organizations, always using identical replacement parts. Unit contains no user service able parts inside.

SERVICE INFORMATION

STANLEY offers a full network of company-owned and authorized service locations. All STANLEY Service Centers are staffed with trained personnel to provide customers with efficient and reliable power tool service. For more information about our authorized service centers and if you need technical advice, repair, or genuine factory replacement parts, contact the STANLEY location nearest you.

TECHNICAL DATA

Pressure Washer	SW21	SW19
Rated Voltage	220-240V~	220-240V~
Frequency	50Hz	50Hz
Power	2100W	1900W
Working flow	6 l/min	5,3 l/min
Max water flow	7,5 l/min	6,6 l/min
Pressure	11 MPa (110 bar)	10 MPa (100 bar)
Maximum pressure	14,5 MPa (145 bar)	13 MPa (130 bar)
MAX PSI	2103	1885
T° input	50 °C	50 °C
Maximum input pressure	1 MPa	1 MPa
Repulsive force of the gun to the maximum pressure	14,8 N	12,5 N
Degree of protection	IPX5	IPX5
Sound level K=2,5 dB(A):		
L _{PA} (EN 60704-1)	72 dB(A)	72 dB(A)
L _{WA} (EN 60704-1)	88 dB(A)	88 dB(A)
Unit vibrations (K = 1 m/s ²):	≤2,5 m/s	≤2,5 m/s
Weight	14,2kg (31,3lb)	13kg (28,7lb)

TROUBLE SHOOTING

PROBLEM	POSSIBLE CAUSES	SOLUTION
Pump does not reach working pressure	Nozzle worn	Replace nozzle
	Water filter fouled	Clean filter (8) (Fig. E)
	Insufficient water supply	Turn on water supply tap fully
	Air being sucked into system	Check tightness of hose fittings
	Air in pump	Switch off the appliance and keep depressing and releasing the gun trigger until the water comes out in a steady flow. Switch the appliance back on again.
	Adjustable nozzle not positioned correctly	Set nozzle (6) on (+) setting (Fig. C)
	Thermostatic valve tripped	Wait for correct water temperature to be restored
	Water being sucked from an open container from a height of more than 0.5 m.	Reduce the suction height.
Pump pressure drops during suddenly use	Water being sucked from an external tank	Connect appliance to the mains water supply
	Inlet water too hot	Reduce temperature
	Nozzle clogged	Clean nozzle (Fig. E)
	Inlet filter (8) fouled	Clean filter (8) (Fig. E)
Motor "buzzes" but fails to start	Power supply voltage too low	Check that the voltage of the mains power supply line is the same as that on the plate (Fig. B)
	Voltage drop due to use of extension cable	Check characteristics of extension cable
	Appliance not used for a long period of time	Contact your nearest Authorised Service Centre
	Problems with TSS device	Contact your nearest Authorised Service Centre
Motor fails to start	No electrical power	Check that the plug is firmly in the socket and that the mains voltage supply is present (*)
	Problems with TSS device	Contact your nearest Authorized Service Centre
	Appliance not used for a long period of time	Using the tool unjam the motor through the hole at the rear of the appliance (in models with this feature) (Fig. E)
Water leakage	Seals worn	Have the seals replaced at your nearest Authorized Service Centre
	Safety valve tripped and discharging	Contact an Authorized service Centre
Appliance noisy	Water too hot	Reduce temperature (See technical data)
Oil leakage	Seals worn	Contact your nearest Authorized Service Centre
TSS versions only: Motor starts even with gun trigger is released	High pressure system or pump hydraulic circuit not watertight	Contact your nearest Authorized Service Centre
TSS versions only: No water delivery when gun trigger is depressed (With supply hose connected)	Nozzle clogged	Clean nozzle (Fig. E)

No detergent sucked in	Adjustable nozzle on high pressure setting	set nozzle (6) on "■" setting (Fig.C)
	Detergent too dense	Dilute with water
	High pressure hose extension being used	Fit original hose
	Deposits or restriction in detergent circuit	Flush with clean water and eliminate any restrictions. If the problem persists, contact an Authorized service Centre
Water escapes from thermo- stat valve	Water temperature inside pump head has exceeded max. rated value stated on nameplate	With appliance in operation, do not stop the water jet for more than 5 minutes at a time

* If the motor starts and does not restart during operation, wait 2-3 minutes before repeating the start-up procedure (**overload cutout has been tripped**).

If the problem recurs more than once, contact your nearest Authorized Service Centre.

