

STANLEY®

ST-14A-CH-E / ST-14S-CH-E



Mobile Infrared Gas Heater

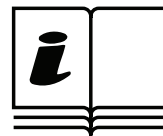
NEVER LEAVE HEATER UNATTENDED WHILE BURNING, OR WHILE CONNECTED TO A FUEL SOURCE.

ST-14A-CH-E: Requires 1x AAA size battery—not supplied with the unit.

Hose and Regulator Included	Hose and Regulator Not Included
GB, IE	ES, PT, RO, PL, FR, TR, DE



0845-16
PIN: 0845CR-0037



ST-14S-CH-E
GB: 0657888160151
IR: 0657888160366

GB

**PLEASE READ THE FOLLOWING INSTRUCTIONS CAREFULLY
BEFORE USING THE APPLIANCE.**

- **DANGER:** Only use the heater in a well ventilated area.
This is an unvented gas heater. It uses air (oxygen) from the area in which it is used. Ample combustion and ventilation air must be provided. This heater produces carbon monoxide, an odorless, highly poisonous gas. Improper use in an enclosed space without adequate ventilation can cause carbon monoxide poisoning and death. This appliance requires a hose and regulator, check with your supplier. Please ignore the last sentence if regulator and hose included.
- If a gas leak is detected or suspected, or if the smell of gas is present:
 - open windows and doors to provide fresh air,
 - shut off gas at the gas cylinder valve,
 - do not attempt to light the heater,
 - extinguish any open flame and remove any ignition source,
 - do not use any electric device, switch or phone in the area,
 - contact your local gas supplier or fire department from a neighbor's phone and follow their instructions,
 - have the heater checked by an authorized service agency.
- Do not use the heater in high rise flats, basements, bathrooms or bedrooms.
- Do not use in leisure vehicles such as caravans and auto-caravans (motorhomes).
- Do not place the heater close to walls, furniture, hangings, net curtains, bed linen and any other inflammable material. Fire hazard!
- Provide adequate clearance for accessibility, combustion and ventilation air supply. Do not restrict any openings on the heater.
- **MINIMUM CLEARANCES FROM COMBUSTIBLE MATERIALS, OBJECTS, WALLS, ETC.**

Sides: 31 cm

Top: 61 cm

Front: 200 cm

- Place the heater on a level, stable, heat- and fire-resistant surface to prevent any hazard.
- Do not use on finished floors.
- Do not expose directly the heater to rain or dripping water.

GB

**PLEASE READ THE FOLLOWING INSTRUCTIONS CAREFULLY
BEFORE USING THE APPLIANCE.**

- Do not cover. Do not place anything, including clothes, towels, etc. over the heater, even when not in use.
- Do not move the heater while operating, shocks and bumps may activate the safety device.
- A front safety guard is fitted on the heater to prevent risk of fire or injury from burns. Do not remove it for any reason. **HOWEVER, IT DOES NOT GIVE FULL PROTECTION FOR YOUNG CHILDREN OR THE INFIRM.**
- This appliance is not intended for use by persons (including children) with reduced physical, sensory or mental capabilities or lack of experience and knowledge, unless they have been given supervision or instruction concerning the use of the appliance by a person responsible for their safety. Children should be supervised to ensure that they do not play with the appliance.
- Some parts of the heater become very hot during operation and may cause burns. Special attention is required if children and vulnerable people are present. Do not handle the heater during and after use until it had cooled down. To prevent injury, use wear gloves when handling the heater.
- Do not stand or pass too close to the heater while in use. Danger of burns! Keep a minimum safety distance of 1 m.
- There may be trace of odor during the first few minutes of initial use. This is normal and will quickly disappear.
- **CAUTION:** Some parts of this product can become very hot and cause burns. Particular attention has to be given where children and vulnerable people are present.
- The heater must not be located immediately below a socket-outlet.
- Do not use this heater in the immediate surroundings of a bath, a shower or a swimming pool.
- Do not use the appliance for other than its intended use. For domestic indoor use only. Use only in well ventilated areas.
- Place the appliance on a flat, stable, heat-resistant surface. Operating the product in any other position could cause a hazard.
- There may be trace of odour during the first few minutes of initial use. This is normal and will quickly disappear.
- Do not attempt to repair, disassemble or modify the appliance. There are no user-serviceable parts inside.

GB

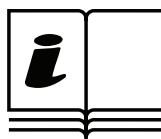
**PLEASE READ THE FOLLOWING INSTRUCTIONS CAREFULLY
BEFORE USING THE APPLIANCE.**

- **WARNING** Fire, burn, inhalation, and explosion hazard. Never use the heater in spaces which do or may contain volatile or airborne combustibles or products such as gasoline, solvents, paint thinner, dust particles, or unknown chemicals.
- Gas cylinders not connected for use shall not be stored in proximity of this or any other appliance.
- Change gas cylinder according to the provided instructions.
- Do not twist the gas supply hose.
- Regularly check the gas hose and replace it as needed.
- Use only the pressure regulator and hose supplied with the unit (when supplied). Do not connect the heater to an unregulated gas supply.
- Use only the recommended types of fuel gases. Do not attempt to convert to other gases.
- Do not use the heater if damaged, defective or not fully assembled. Inspect and check the heater before each use.
- Do not attempt to repair, disassemble or modify the heater by yourself. There are no user-serviceable parts inside. For service and repair always contact an authorized service point.
- The heater should be inspected at least annually by a qualified service technician.
- After use turn off the appliance at the gas cylinder valve.
- Strictly follow all cleaning, maintenance and storage guidelines contained in this manual. Never clean or maintain a heater when hot or operating.

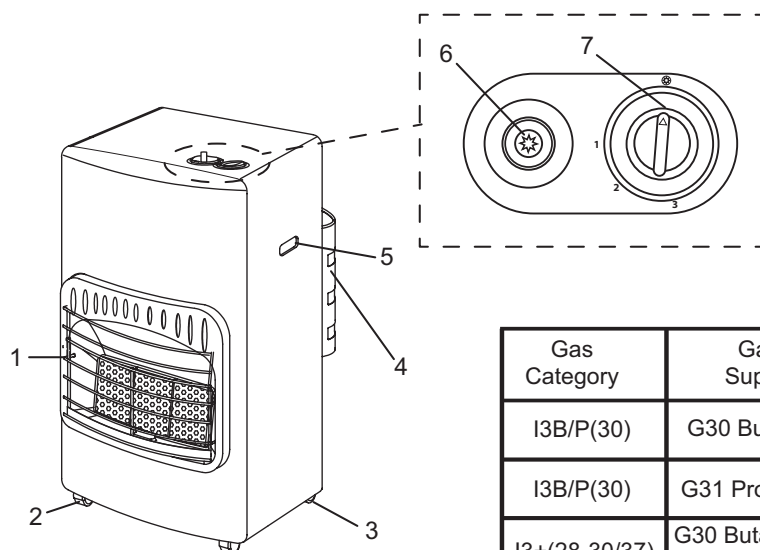


Disposal of an exhausted batteries

To preserve natural resources, please recycle or dispose of the batteries properly. Consult your local waste authority for information regarding available recycling and /or disposal options.



Read The Instruction manual: When this symbol is marked on a product, it means that the instruction manual must be read.



- GB
- 1. SAFETY GUARD
 - 2. FRONT CASTOR
 - 3. REAR CASTOR
 - 4. BACK COVER
 - 5. HANDLE SLOT
 - 6. PIEZO / BATTERY
 - 7. VALVE KNOB

Gas Category	Gas Type and Supply Pressure	Country of Destination
I3B/P(30)	G30 Butane at 30 mbar	NL, FI, SE, CZ, NO, TR, RO, IT
I3B/P(30)	G31 Propane at 30 mbar	NL, FI, SE, CZ, NO, TR, RO, IT
I3+(28-30/37)	G30 Butane at 28-30 mbar G31 Propane at 37 mbar	FR, IT, GB, PT, ES, CZ, IE
I3B/P(37)	G30 Butane at 37 mbar	PL
I3B/P(37)	G31 Propane at 37 mbar	PL
I3B/P(50)	G30 Butane at 50 mbar	DE
I3B/P(50)	G31 Propane at 50 mbar	DE

GB

SPECIFICATIONS

Specifications subject to change without notice

	ST-14A-CH-E / ST-14S-CH-E
THERMAL POWER (kW)	1.5 / 2.9 / 4.2
HEATING AREA (m ³)	80 m ³
FUEL CONSUMPTION (g / h)	110 / 211 / 305
MAX. OPERATING HOURS	130
IGNITION	14A: BATTERY (AAA size, 1.5 Volt nominal—not provided) / 14S: PIEZO
GAS CYLINDER SIZE	13 kg
HOSE TYPE	Rubber or Plastic hose complied with BS EN16436- 1:2014 (when supplied)
HOSE LENGTH	0.5 m to 1.0 m
REGULATOR TYPE	LPG Gas Regulator
COUNTRY OF DESTINATION	GB, IE

NEVER LEAVE HEATER UNATTENDED WHILE CONNECTED TO A POWER SOURCE

Read this User's Manual carefully and completely before attempting to operate or service this heater. If the information in this manual is not followed exactly, a fire or explosion may result causing property damage, personal injury or loss of life.

- Do not store or use gasoline or other flammable vapors and liquids in the vicinity of this or any other appliance.

- An LP cylinder not connected for use shall not be stored in the vicinity of this or any other appliance.

WHAT TO DO IF THE SMELL OF GAS IS PRESENT:

- DO NOT attempt to light heater! Extinguish any open flame
- Shut off gas to heater at the gas cylinder valve.
- If odor continues, contact your local gas supplier or fire dept.
- Do not touch any electric switch, do not use any phone in your building
- Immediately call your gas supplier from a neighbor's phone.
- Follow the gas supplier instructions
- If you cannot reach your gas supplier, call the fire department
- Service must be done by a qualified service agency or the gas supplier

NOT TO BE USED FOR THE HEATING OF HABITABLE AREAS OF DOMESTIC PREMISES; FOR USE IN PUBLIC BUILDINGS, REFER TO NATIONAL REGULATIONS

1. Read and understand the instructions and safety warnings contained in the instruction manual before use. Failure to do so could result in personal injury or property damage. Failure to do so will also invalidate the warranty.
2. Only use the heater in well ventilated areas.
3. Ensure heater is correctly turned off after use and disconnect gas cylinder. Only fully qualified personnel should carry out maintenance and repair.
4. Ensure heater has cooled down before undertaking any maintenance.
5. DO NOT use heater in areas containing flammable or explosive material.
6. DO NOT point heater at the gas cylinder.
7. DO NOT obstruct the air inlet and the outlet sections of the heater.
8. DO NOT operate the heater without the Shell or Cover.
9. DO NOT exceed the 100W / m³ limit considering the volume of the empty operating area.
10. DO NOT use a bare flame to try and ignite the heater.

General Safety Information

▲ WARNING *Fire, burn, inhalation, and explosion hazard. Keep solid combustibles such as walls, furniture, hangings, net curtains, bed linen and other inflammable materials at a safe distance away from heater as recommended by the instructions. Never use the heater in spaces which do or may contain volatile or airborne combustibles or products such as gasoline, solvents, paint thinner, dust particles, or unknown chemicals.*

Consumer: Retain these instructions for future reference.

IMPORTANT: Read this User's Manual carefully and completely before attempting to operate or service this heater.

Improper use of this heater can result in serious injury or death from burns, fire, explosion, electrical shock and/or carbon monoxide poisoning. DO NOT use this heater below ground level, in high rise flats, in basements, bathrooms or bedrooms. Do not use in leisure vehicles such as caravans and autocaravans.

▲ CAUTION *This is an unvented mobile heater. It uses air (oxygen) from the area which it is used. Ample combustion and ventilation air must be provided. This heater produces carbon monoxide, which has no odor. Burning the heater in an enclosed space can kill you.*

This heater is certified as a domestic flueless gas heater in accordance with the European Gas Appliance Directive 2009/142/EC and the European Standard EN 449:2002 +A1:2007. Other national and local regulations may govern and/or restrict the use of fuel gases and heating products for specific uses. Check with your local authorities.

The intended use of this heater is to provide comfort heating in well ventilated indoor premises. Do not use the heater for any other different purpose. When properly used, the heater provides safe economical heating. The products of combustion are vented into the heated area.

The heater functions with a 13 kg LPG cylinder (not included) that fits into the rear of the unit. Three heat settings (1.5 - 2.9 - 4.2 kW) are available. The heater is equipped with a flame failure device, (a tilt switch) and an atmosphere sensing device.

IMPORTANT SAFETY INFORMATION

- Children should be kept away.
- Always maintain proper clearance from combustible materials. Minimum clearance should be:

Sides - 31 cm Top - 61 cm Front - 200 cm

- Heater must be placed on level and solid footing.
- Never place anything, including clothes or other flammable items on heater.
- Do not modify heater, or operate a heater that has been modified.
- Adequate clearance for accessibility, combustion and ventilation (air supply) must be maintained at all times when heater is operating. Do not restrict air inlet or outlet areas of heater.
- Service and repair should be performed by a qualified service person. The heater should be inspected before each use, and at least annually by a qualified person. More frequent cleaning may be required as necessary. Do not service heater while hot or operating.
- Never connect heater to an unregulated gas supply.
- To prevent injury, always wear gloves when handling heater. Never handle an operating or hot heater, as severe burns may result.
- Use heater in accordance with all local codes.
- DO NOT operate a damaged heater. Check the heater thoroughly for damage before each use.
- Never use any other hose and regulator (when supplied).
- Keep heater area free from combustible materials such as gasoline, paint thinners and other flammable vapors and liquids. Dust is combustible. Do not use heater in areas of high dust concentration.
- Always set heater on a stable, level surface and use the caster locks to prevent movement of the heater.
- This heater is not for use on finished floors.
- Operate in a manner that heater will not be exposed directly to rain or dripping water.
- Keep curtains away from heater. Do not place clothing or any combustible items on heater.
- DO NOT attempt to convert to any other gas.
- Be sure that the shut-off valve is closed tightly after each use.
- NEVER use heater in occupied dwellings, enclosed shelters, residential living areas, recreational vehicles, tents, or in non-adequately ventilated enclosed spaces.
- Never operate heater unless LP cylinder is properly connected and installed.
- After use turn off the heater at the gas cylinder valve.

NEVER LEAVE HEATER UNATTENDED WHILE CONNECTED TO A POWER SOURCE

Unpacking and Assembly

1. Remove heater and base from Carton (Save carton and packing materials for later storage).
2. Remove all protective packaging protecting heater during shipping.
2. Inspect heater closely for any damage that may have occurred during shipping. If there is any damage, return the heater to the place of purchase.
4. Remove back cover away from heater body by loosening the fixed screws. Put down the base if it's foldable and fix with the supplied screws and nuts.
5. Place the LPG cylinder on the base plate and replace the back cover.

Connecting to Gas Supply

IMPORTANT! Always use a Propane / Butane (LP) cylinder that has a connection device that is compatible with the hose and regulator assembly supplied (when supplied).

1. Remove the Back Cover by sliding the cover straight up and away from the Heater Body. Place the LP cylinder on the Bottom Plate and replace the Back Cover.

2. To connect LP cylinder, insert regulator end fitting into cylinder valve, rotate coupling nut clockwise and tighten.

CAUTION

3. Open valve on Propane / Butane cylinder slowly. If the valve is not opened slowly, the excess flow check valve in the regulator will stop the flow of gas. If this should happen, close the valve, wait one minute (or until you hear the valve click), and re-open, slowly.

VENTILATION

Provide and maintain adequate ventilation in the heated space through outside openings of appropriate size. See room volume and opening area requirements below:

HEAT SETTING / MINIMUM ROOM VOLUME / MINIMUM OPENING AREA

MIN.	26 m ³	130 cm ²
MED.	32 m ³	155 cm ²
MAX.	50 m ³	245 cm ²

Do not expose the heater to strong drafts.

Always provide a fresh air opening in the heated space of at least 2,800 sq. cm for each 29 kW of heater output. Provide a larger opening if more heaters are being used.

WARNING

Never use this heater in a room with a total volume of less than 26 m³.

The Propane / Butane (LP) gas pressure regulator and hose assembly supplied with the heater must be used without alteration (when supplied).

INSTALLATION

1. Inspect LP cylinder to ensure it is in good condition.
2. Remove the Back Cover by sliding the cover straight up and away from the Heater Body. Place the LP cylinder on the Bottom Plate and replace the Back Cover.
3. Connect regulator to a Propane / Butane gas supply cylinder, and avoid twisting of the hose.

NOTE: Optimum efficiency is achieved when the heater uses the appropriate full LP cylinder

4. Slowly open the LP cylinder. Leak test all gas connections with 50/50 soap and water solution prior to start-up. Soap bubbles indicate a gas leak. DO NOT use a match or flame to test for gas leaks.

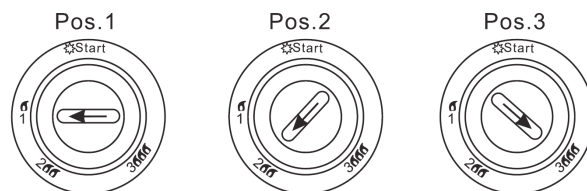
Lighting and Operating Instructions (ST-14S-CH-E Only)

1. Open the LP cylinder by turning the LP cylinder valve counter-clockwise.
2. Turn the Valve Knob on heater to the Pilot position.
3. Wait five (5) minutes for any gas to clear. Smell for gas. If none is evident, proceed to the next step.
4. Push in the Valve Knob in pilot position.

NOTE: If this is the first time using the heater, or the LP cylinder has been replaced, hold the valve knob for approximately 30 seconds to allow air to bleed from then system, and then turn the valve knob to the pilot position.

5. While depressing the valve knob, press red piezo ignition button to ignite. It may be necessary to press the ignitor button several times to ignite the center burner panel.
6. Continue to hold valve knob down for 30 seconds after the panel has lit. This will heat the thermocouple. After 30 seconds, release the valve knob.
7. If heater fails to light, or does not stay lit, repeat Steps 2 through 6.
8. When the center burner panel stays lit, turn valve knob to desired setting.

Lighting and Operating Instructions (ST-14A-CH-E Only)



NOTE: The heater has four settings: Start, Minimum (Pos. 1), Medium (Pos. 2), and Maximum (Pos. 3).

1. Unscrew the cover of the ignition and place the battery (AAA size, NOT PROVIDED) into the ignition, and then screw the cover back onto the ignition. See "Replacing the Battery" below for detailed instructions.
2. Turn on the gas cylinder by turning the gas regulator to the "ON" position.
3. Turn the valve knob to the "START" position and press down. Hold for 10 seconds.
4. Press down the ignition button and the valve knob until the pilot flame ignites. Continue pressing down the valve knob for 10-15 seconds. Release the control knob when the pilot flame becomes stable. Repeat the above steps if the pilot flame goes out.

NOTE: If this is the first time using the heater, or the LP cylinder has been replaced, hold the valve knob for approximately 30 seconds to allow air to bleed from then system, and then turn the valve knob to the pilot position.

5. When the center burner panel stays lit, turn valve knob to desired setting.

How to Change a Cylinder

1. Cylinders must be replaced in a non-flammable and non-smoking environment.
2. When you need to replace your empty cylinder, turn the gas off first.
3. Make sure that the heater is extinguished completely.
4. Remove the regulator from the empty cylinder and change a new full one.

NEVER LEAVE HEATER UNATTENDED WHILE CONNECTED TO A POWER SOURCE

Shutdown Instructions

1. Close the LP cylinder by turning the LP cylinder valve clockwise.
2. Turn the knob at the LP cylinder clockwise to the pilot position.
3. Disconnect the Regulator Hose assembly from the LP cylinder.

Replacing the Battery (ST-14A-CH-E Only)

1. Unscrew the cover of the battery ignition.



2. Replace the old battery in the ignition with a new battery.



3. Screw the cover back onto the ignition.



Maintenance / Storage

Always disconnect the LP cylinder from the regulator assembly and remove the LP cylinder from the heater before putting the heater into storage. If for any reason the heater is to be stored indoors, the heater MUST be disconnected from the LP cylinder, and the cylinder stored outdoors in a well-ventilated area, out of the reach of children. The plastic valve plug or valve cover supplied with the LP cylinder must be reinstalled on the valve to protect the fitting from damage. Changing cylinder shall be undertaken in a flame-free atmosphere. Regularly check hose and replace it if necessary.

NOTE: Repair of this heater should be done by a qualified service person.

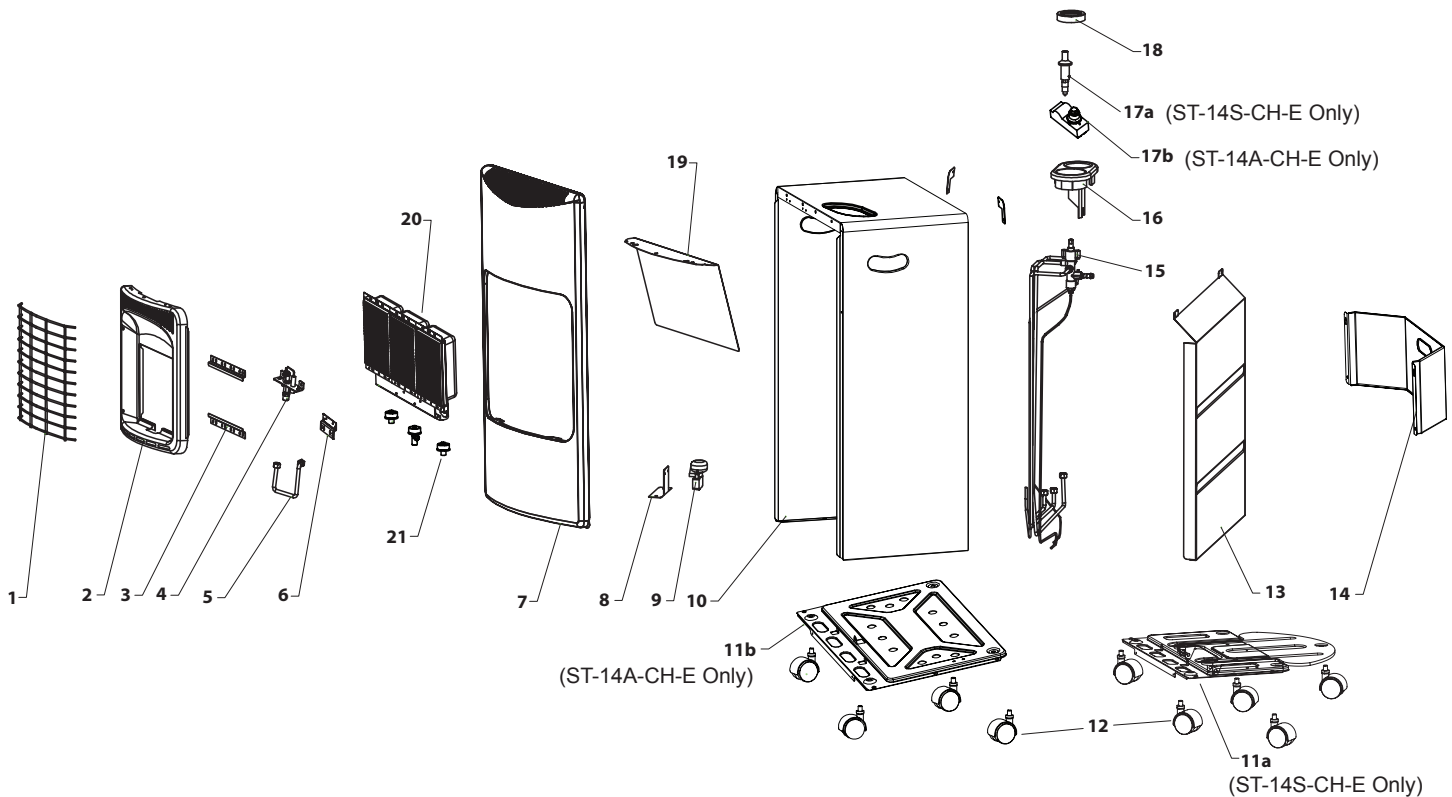
Save all packaging materials that came with your heater, and re-package the heater for safe storage. Be sure to inspect the heater before each use to look for any such obstructions such as spiderwebs. Be sure to keep the air passage-ways, burner and combustion areas clean. This heater should receive a thorough cleaning at least once every 30 days of operation. You may need to clean the heater more often if conditions are naturally dirty. Clean the Burner Panels using compressed air below 30 PSI to prevent damage to panels. A yellow tip of the pilot flame indicates that the burner area may be in need of cleaning.

Troubleshooting

Problem	Possible Cause	Solution
Burner does not light	<ol style="list-style-type: none"> 1. Air in gas line 2. Gas pressure from cylinder too low 3. LP cylinder valve turned off 4. Obstruction in air passageway 5. Dirt in pilot orifice 6. Safety switch in cylinder valve engaged 	<ol style="list-style-type: none"> 1. Keep depressing the valve knob for at least 30 seconds to remove any air in line. 2. Check LP cylinder pressure. Tank may be empty 3. Open LP cylinder valve 4. Inspect and clean heater housing 5. Blow out, or otherwise clean the pilot orifice 6. Close LP cylinder valve. Wait one minute for switch to click off. Reopen LP cylinder valve slowly
No spark is created when ignited	<ol style="list-style-type: none"> 1. Electrode damaged or broken 2. Loose or disconnected igniter wire 3. Broken igniter wire 	<ol style="list-style-type: none"> 1. Replace the electrode 2. Tighten or reconnect loose wire 3. Replace igniter wire
Heater stops running by itself	<ol style="list-style-type: none"> 1. Thermocouple damaged 2. Gas control valve damaged 3. Gas leak 4. Thermocouple not in contact with pilot flame 5. Out of fuel 	<ol style="list-style-type: none"> 1. Replace thermocouple 2. Replace gas control valve 3. Check all connections for leaks and repair 4. Clean inside of heater housing 5. Replace LP cylinder

NEVER LEAVE HEATER UNATTENDED WHILE CONNECTED TO A POWER SOURCE

EXPLODED VIEW



PARTS LIST

#	ST-14A-CH-E ST-14S-CH-E
1	Front Guard
2	Wind Guard
3	Ceramic Holder
4	ODS Assembly
5	Fuel Line
6	Support Bracket
7	Front Housing
8	Tilt Switch Bracket
9	Tilt Switch
10	Body Panel
11a	Bottom Plate
11b	Bottom Plate
12	Wheel
13	Heat Insulator

#	ST-14A-CH-E ST-14S-CH-E
14	Cylinder Holder
15	Valve Assembly
16	Knob/Igniter Support
17a	Piezo Igniter
17b	Battery Ignition
18	Valve Knob
19	Heat Plate
20	Burner
21	Nozzle

STANLEY®

DO NOT RETURN THE UNIT TO THE STORE!

If you are having problems with your brand new Stanley product,
Please call our Technical Support at:

0845 076 6158

**Technicians are standing by to help you
Monday – Friday from 8am –5:30pm.**

To expedite your call, please have your Model Number and Serial Number Available.

STANLEY®

Pinnacle Climate Technologies, Inc.
Sauk Rapids, MN 56379 USA

EC REP

Obelis S.A.
Registered Address:
Bd. Général Wahis, 53
1030 Brussels, Belgium

© 2017 Stanley Black & Decker, Inc.