

STANLEY®

WWW.STANLEY.COM

STHT82942

Fig. A

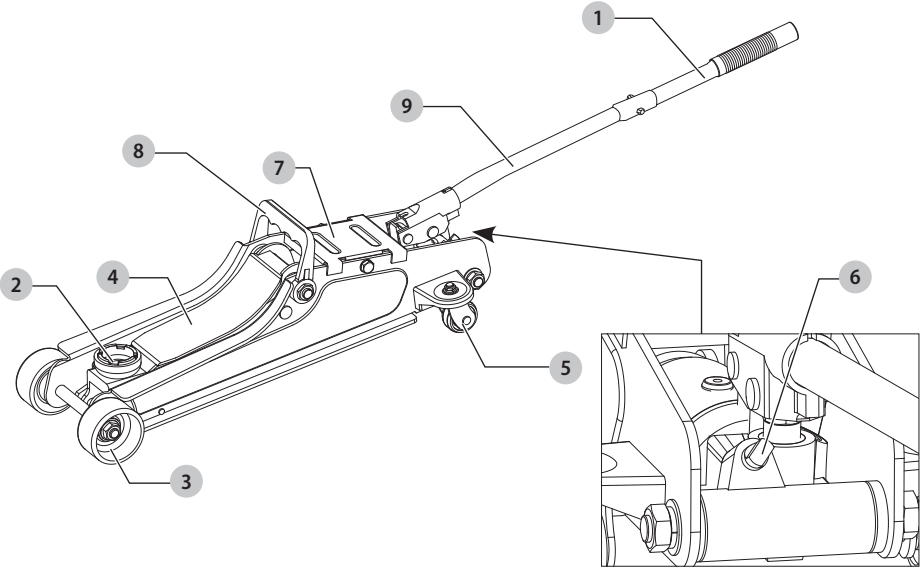


Fig. B

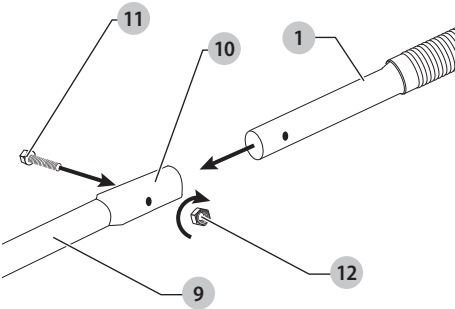


Fig. C

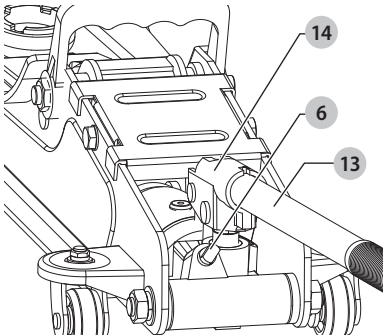
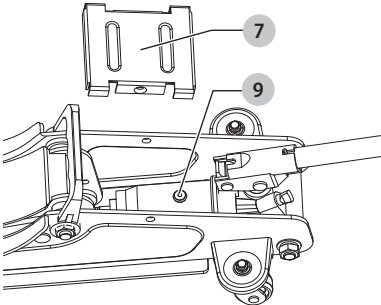


Fig. D



1600KG- LOW PROFILE STEEL SERVICE JACK

STHT82942

Congratulations!

You have chosen a Stanley tool. Years of experience, thorough product development and innovation make Stanley one of the most reliable partners for professional tool users.

Technical Data

	STHT82942	
Capacity	kg	1600
Lifting Range Min.	mm	85
Lifting Range Max	mm	375
Jack Dimensions	mm	560 x 220 x 133
Head Cap Diameter	mm	54
Handle Length	mm	645



WARNING: To reduce the risk of injury, read the instruction manual.

Definitions: Safety Guidelines

The definitions below describe the level of severity for each signal word. Please read the manual and pay attention to these symbols.



DANGER: Indicates an imminently hazardous situation which, if not avoided, **will** result in **death or serious injury**.



WARNING: Indicates a potentially hazardous situation which, if not avoided, **could** result in **death or serious injury**.



CAUTION: Indicates a potentially hazardous situation which, if not avoided, **may** result in **minor or moderate injury**.

NOTICE: Indicates a practice **not related to personal injury** which, if not avoided, **may** result in **property damage**.



Denotes risk of electric shock.



Denotes risk of fire.

GENERAL SAFETY INSTRUCTIONS

IMPORTANT SAFETY CONSIDERATIONS



WARNING: Before operating this device, be sure to read all content within this manual, ensuring that you understand the operating procedures, maintenance requirements and all safety warnings. All users shall have an understanding of the product, its operating characteristics, and safety operating instructions before operating this device. Safety information shall be emphasized and understood.



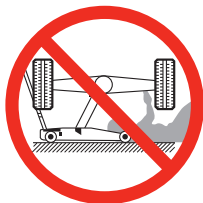
WARNING:

- Study, understand, and follow all instructions before operating this device. Do not exceed the rated capacity stated.
- Use only on a hard level surface and ensure it is free to roll during lifting and lowering.
- Locate the load centrally on the saddle.
- Consult the vehicle owner's manual prior to lifting the vehicle and conduct a pre-operational check of the equipment.
- Support the vehicle with appropriate means immediately after lifting.
- Do not move or dolly the vehicle while it is on the jack.
- Lift only on areas of the vehicle as specified by the vehicle manufacturer.
- No modifications shall be made to this product.
- Failure to heed these markings may result in serious personal injury/ property damage.
- Ensure that there are no persons inside the vehicle to be lifted. Switch off the engine and apply the brake. Ensure the vehicle, or elements of the vehicle, to be lifted cannot move during lifting operations. Use chocks if necessary.
- Do not enter the vehicle or start the engine while it is supported on the jack or appropriate stands.
- The hydraulic trolley jack is a lifting and lowering device only and should never be used to move the vehicle.
- The hydraulic trolley jack should be positioned so as to avoid the need for the user to introduce any part of his/her body underneath the vehicle. Never work under a raised vehicle without previously supporting it with mechanical stands or other appropriate methods. Never position any part of your body near the movable elements of the hydraulic trolley jack.
- If the device jams, lift the vehicle with another jack until the first can be cleared.
- As an additional safety measure against overload, the hydraulic trolley jack is fitted with an overload valve set at the factory and which should not be adjusted under any circumstances. If nominal capacity of the hydraulic trolley jack is exceeded the overload valve will stop the lifting operation.
- Never use this hydraulic trolley jack to lift persons.
- Never use this hydraulic trolley jack as a handling means (for moving loads).
- When the hydraulic trolley jack is not in use, make sure the lifting arm is fully retracted to avoid corrosion.
- Avoid any contact between the hydraulic trolley jack and food. Users should not eat food after it has come in contact with the hydraulic trolley jack.
- This hydraulic trolley jack is designed to be used with a 54mm diameter head cap, and a handle of 645mm in length

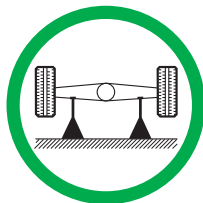
SAVE THESE INSTRUCTIONS FOR FUTURE USE



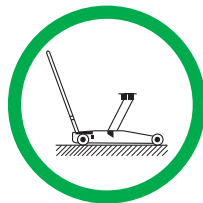
SAFETY WARNING



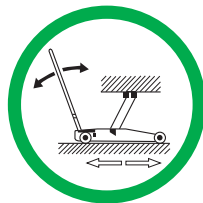
**DEATH OR INJURY FROM
INCORRECT USE**



**USE TWO SUPPORT
STANDS**



**FLAT HARD LEVEL
GROUND**



**FREE TO ROLL DURING
LIFTING AND LOWERING**

**REFER TO VEHICLE MANUFACTURER'S
MANUAL FOR INSTRUCTIONS**

Package Contents

The package contains:

- 1 Service Jack
- 1 Instruction manual
- Check for damage to the tool, parts or accessories which may have occurred during transport.
- Take the time to thoroughly read and understand this manual prior to operation.

Description (Fig. A)

WARNING: Never modify the power tool or any part of it. Damage or personal injury could result.

- 1 Top actuating handle
- 2 Saddle
- 3 Front wheel
- 4 Lifting arm
- 5 Rear swivel casters
- 6 Release valve
- 7 Unit cover
- 8 Carrying handle
- 9 Lower actuating handle

Intended Use

This jack is intended for lifting vehicles prior to installing jack stands. Compact design allows for use in confined spaces. Easily fits under low vehicles. Not intended for professional use.

**COMPLIES WITH CONSUMER GOOD
(TROLLEY JACKS) SAFETY STANDARD 2017**

ASSEMBLY AND ADJUSTMENTS (FIG. B, C)

- Prior to each use, visual inspection shall be made to the device by checking for abnormal conditions including cracked welds, leaks, and damaged, loose, or missing parts.
 - Consult the vehicle owner's manual to determine the location of lift points.
 - Be sure to set the vehicle in park with the emergency brake on and chock the unlifted wheels of the vehicle.
 - Be sure that the vehicle and the jack are on a hard, level surface.
1. Insert the top actuating handle **1** into the lower actuating handle socket **10**.
 2. Insert the provided hex head bolt **11** through the actuating handle assembly and tighten the hex lock nut **12** onto the hex bolt as shown in Fig. B.
- NOTE:** Ensure the two handle pieces are secured together.
3. Insert the fully assembled actuating handle **13** into the handle socket **14** of jack as shown in Fig. C.

OPERATION

Lifting (Fig. C)

WARNING: Immediately after lifting, support the vehicle with appropriately rated jack stands.

1. Using the assembled actuating handle **13**, turn the release valve **6** clockwise to the closed position. Do not overtighten.
2. Position the jack under the specified lift point.
3. Begin lifting by pumping the assembled actuating handle up and down.
4. Immediately after lifting, support the vehicle with appropriately rated jack stands.
5. Turn the release valve **6** slowly counterclockwise to lower the vehicle onto jack stands.

WARNING: Immediately after lifting, support the vehicle with appropriately rated jack stands.

Lowering (Fig. C)

WARNING: Do not get under or let anyone get under the vehicle while lowering

1. Using the assembled actuating handle **13**, turn the release valve **6** clockwise to the closed position. Do not over tighten.
2. Pump the assembled actuating handle up and down to lift vehicle off jack stands.
3. Remove the jack stands. Do not get under or let anyone get under the vehicle while lowering.
4. Turn the release valve slowly counterclockwise to lower the vehicle onto the ground.

Air Venting Procedures (Fig. A, D)

1. With the jack in the fully lowered position, turn the release valve **6** counterclockwise to open.
2. Remove the oil filler plug **9**.
3. Pump the assembled actuating handle **13** rapidly several times. Reinstall oil filler plug
4. Turn the release valve clockwise to the closed position.
5. Pump the assembled handle until the lifting arm **4** reaches maximum height and continue to pump several times to remove trapped air in the system.
6. Turn the release valve counterclockwise in one full turn and lower lifting arm to the lowest position.
7. Use force on saddle **2**, if necessary.
8. Carefully and slowly loosen oil filler plug to release pressurized air.
9. Repeat above steps until trapped air is completely vented
10. Replace and tighten the oil filler plug.

Check or Refill Oil (Fig. A, D)

1. With the jack in the fully lowered, level position, remove oil filler plug **9**.

NOTE: If unit cover **7** is provided, remove unit cover first..

2. Proper oil level should be just covering inner cylinder as seen from the oil filler plug hole.
3. Do not overfill. Always fill with new, clean hydraulic jack oil as recommended in **Maintenance**.
4. Reinstall oil filler plug, then reinstall unit cover (if provided).

MAINTENANCE

NOTICE: Use high grade hydraulic oil only. Never use brake fluid, motor oil, transmission fluid, turbine oil or any other fluids. Damage to seals can occur. ISO-VG22 or equivalent hydraulic oil is recommended.



Lubrication

Periodically clean and lubricate all moving parts and pivot points.

Repairs

Any jack that needs repair, is found to be worn, or operates abnormally **SHALL BE REMOVED FROM SERVICE UNTIL REPAIRED**. It is recommended that necessary repairs be made by a manufacturer's repair centre if repairs are permitted by the manufacturer.

Alterations



WARNING: Because of potential hazards associated with this type of equipment, no modifications shall be made to the product.

Attachments and Adapters



WARNING: Only attachments and/or adapters supplied by the manufacturer shall be used. Serious injury or death can occur if non-factory parts are used.

Inspection

- Visual inspection shall be made before each use of the device by checking for abnormal conditions, such as cracked welds, leaks, and damaged, loose, or missing parts.
- Other inspections shall be made per product operating instructions.
- This device shall be inspected immediately if the device is believed to have been subjected to an abnormal load or shock. It is recommended that this inspection be made by a manufacturer's authorized repair facility.
- Owners and/or operators should be aware that repair of this equipment may require specialized knowledge and facilities. It is recommended that an annual inspection of the product be made by a manufacturer's authorized repair facility and that any defective parts, decals, or safety labels or signs be replaced with manufacturer's specified parts.

Storage

Store in a dry location on a level surface.

One Year Limited Warranty

STANLEY will repair or replace, without charge, any defects due to faulty materials or workmanship for one year from the date of purchase. This warranty does not cover part failure due to normal wear or tool abuse. For further detail of warranty coverage and warranty repair information, visit www.stanley.com. This warranty does not apply to accessories or damage caused where repairs have been made or attempted by others. **THIS LIMITED WARRANTY IS GIVEN IN LIEU OF ALL OTHERS, INCLUDING THE IMPLIED WARRANTY OF MERCHANTABILITY AND FITNESS FOR A PARTICULAR PURPOSE, AND EXCLUDES ALL INCIDENTAL OR CONSEQUENTIAL DAMAGES.** Some states do not allow limitations on how long an implied warranty lasts or the exclusion or limitation of incidental or consequential damages, so these limitations may not apply to you. This warranty gives you specific legal rights and you may have other rights which vary in certain states or provinces.

30 DAY MONEY BACK GUARANTEE

If you are not completely satisfied with the performance of your STANLEY Service Jack for any reason, you can return it within 90 days from the date of purchase with a receipt for a full refund – no questions asked.

LATIN AMERICA: This warranty does not apply to products sold in Latin America. For products sold in Latin America, see country specific warranty information contained in the packaging, call the local company or see website for warranty information.

FREE WARNING LABEL REPLACEMENT: If your warning labels become illegible or are missing, go to www.stanley.com for a free replacement.

STANLEY

Copyright © 2018 Stanley Tools
Stanley Europe, Egide Walschaersstraat 14-16
2800 Mechelen, Belgium
www.2helpU.com

TROUBLESHOOTING GUIDE

BE SURE TO FOLLOW SAFETY RULES AND INSTRUCTIONS

For assistance with your product, visit our website at www.stanley.com for a list of repair centres.

PROBLEM	POSSIBLE CAUSE	SOLUTION
Jack will not lift the load.	Release valve not tightly closed.	Tighten release valve.
	Low oil level.	Check and add oil. Refer to Check or Refill Oil .
	Defective or worn internal parts.	Discontinue use. Contact an authorised STANLEY repair centre to have the jack checked and/or serviced.
	Load exceeds maximum allowance.	Use a higher capacity jack.
Jack will not hold weight.	Release valve in open position.	Insure release valve in closed position.
		Discontinue use. Contact an authorised STANLEY repair centre to have the jack checked and/or serviced.
Jack will not descend to minimum height, or will not remain in lowered position.	Air trapped in system.	Vent air out of system. Refer to Air Venting Procedures .
	Reservoir oil overfilled.	Check and ensure proper oil level. Refer to Check or Refill Oil .
Jack will not lift to max height.	Low oil level.	Check and ensure proper oil level. Refer to Check or Refill Oil .
Jack continues to malfunction.	Internal malfunction or structural damage.	Discontinue use. Contact an authorised STANLEY repair centre to have the jack checked and/or serviced.

